

1

2

3

4

Notes: (Unless Otherwise Specified)

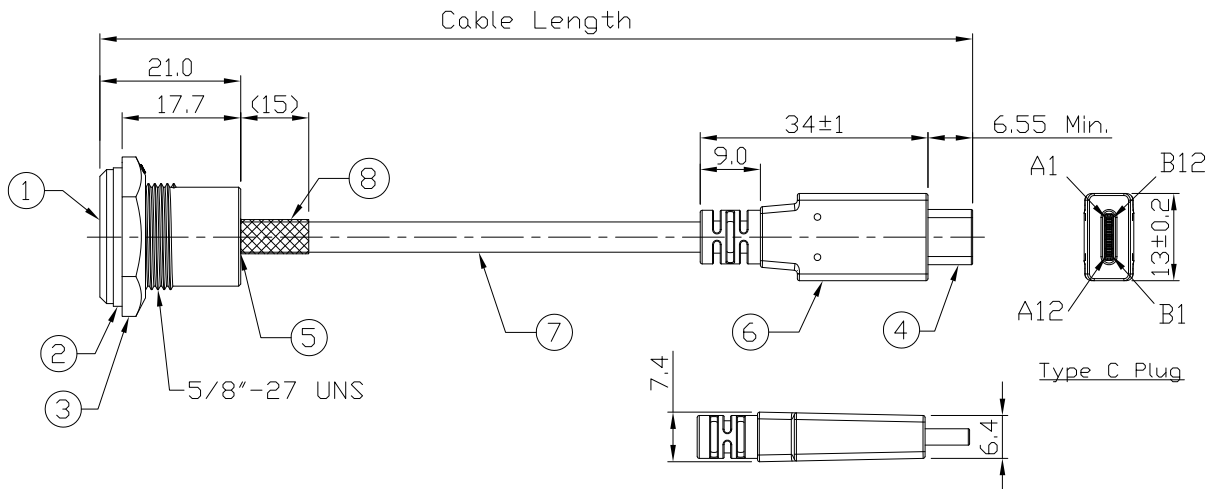
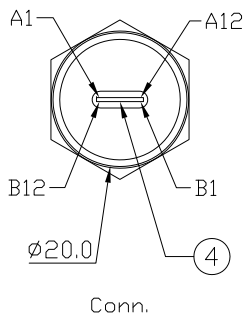
- 1. Waterproof Rate: IP67.
- 2. Recommend Panel Thickness: 0.8 to 3.0 mm.
- 3. Recommend Torque: 9~10 Kgf-cm.
- 4. RoHS Compliant.
- 5. Type C -Pin Out Is The Same As This Drawing.
- 6. UL Certification file #E364108.
- 7. Pack each cable in a poly bag and 25pcs in a poly bag.

| REV | ECN# | DESCRIPTION OF REVISION | DRAW BY DATE   | CHECK BY DATE  | APPROVE BY DATE |
|-----|------|-------------------------|----------------|----------------|-----------------|
| A0  |      |                         | Jenny 08/30/22 | Lucas 08/30/22 | Ray 08/30/22    |

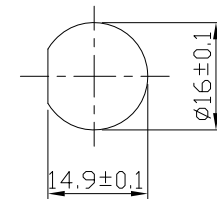
RR-11C401-01-XX\_REV:XX\_QTY:1PCS  
**LOT: XXXX**  
**Made in XXXXX**

RR-11C401-01-XX\_REV:XX\_QTY:25PCS  
**LOT: XXXX**  
**Made in XXXXX**

GTC  
 DOC.CENTER.ISSUE  
 AUG.30.2022  
 ONLY FOR  
 RELEASE



|      |                |  |     |
|------|----------------|--|-----|
| 8    | Shrink Tube    | L=20mm, Heat Shrink Tube With Adhesive Lined<br>Color: Black   | 1   |
| 7    | Cable          | UL21572 (1P/32#+EAM)*4+(1P/32#+A)+(4C/32#+)(1C/24#+)+2EAB 85%<br>OD:4.8mm Black TPE Jacket.                                    | 1   |
| 6    | Over Mold      | PVC<br>Color: Black  | 1   |
| 5    | Glue           | Epoxy<br>Color: Black  |     |
| 4    | USB Type C 3.1 | Housing: Thermoplastic, Color: Black<br>Contacts: Copper Alloy, Finish: Au Plated<br>Shell: Stainless Steel, Finish: Au Plated | 2   |
| 3    | Hex Nut        | Thermoplastic<br>Color: Black  | 1   |
| 2    | Gasket         | Silicone<br>Color: Black   | 1   |
| 1    | Housing        | Thermoplastic<br>Color: Black  | 1   |
| Item | Part Name      | Material / Finish  | Qty |



Recommend  
 Panel Cut-Out

|                 |              |      |
|-----------------|--------------|------|
| RR-11C401-01-50 | 1270 mm      | +50  |
| RR-11C401-01-20 | 508 mm       | +50  |
| RR-11C401-01-12 | 305 mm       | +25  |
| RR-11C401-01-10 | 254 mm       | +25  |
| RR-11C401-01-08 | 203 mm       | +25  |
| Part No.        | Cable Length | Tol. |

| TITLE   |      |       |                |                |                | DRAWING NUMBER          |                             |      | REV.  |  |
|---|------|-------|----------------|----------------|----------------|-------------------------|-----------------------------|------|-------|--|
| USB 3.1 Type C Plastic C2 Panel Jack With Type C Plug |      |       |                |                |                | RR-11C401-01-XX         |                             |      | A0    |  |
|   | B    | 1:1   | Jenny 08/30/22 | Lucas 08/30/22 | Ray 08/30/22   | X.X ± 0.5<br>X.XX ± 0.2 | X.XXX ± 0.05<br>ANGLES ± 1° | mm   | 1/2   |  |
| THIRD ANGLE PROJECTION                                | SIZE | SCALE | DRAW / DATE    | CHECK / DATE   | APPROVE / DATE | TOLERANCES              |                             | UNIT | SHEET |  |

USB FIREWIRE.com

THE INFORMATION CONTAINED HEREIN IS THE PROPRIETARY INFORMATION OF RR BUSINESS VENTURES, LLC. THE POSSESSOR AGREES TO THE FOLLOWING:

1. MAINTAIN THIS DOCUMENT IN CONFIDENCE
2. NOT TO REPRODUCE OR COPY IT
3. NOT TO REVEAL OR PUBLISH IT IN WHOLE OR IN PART

COPYRIGHT © 2019

1

2

3

4

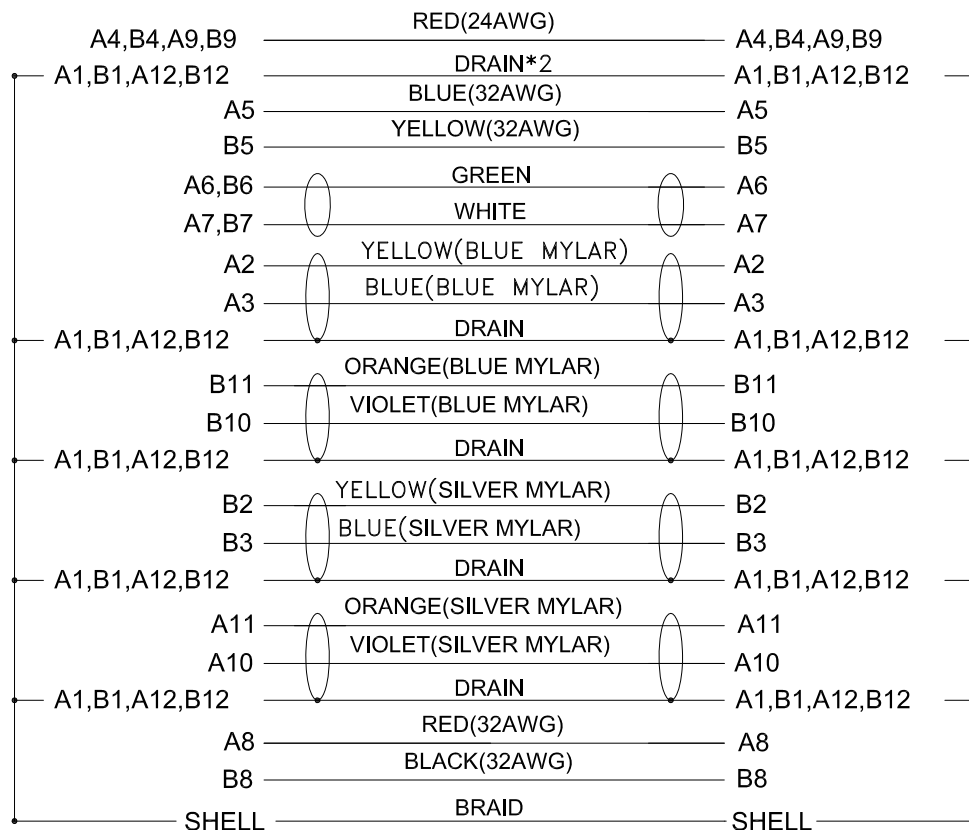
1

2

3

4

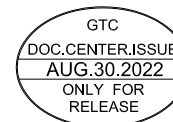
| REV | ECN# | DESCRIPTION OF REVISION | DRAW BY DATE   | CHECK BY DATE  | APPROVE BY DATE |
|-----|------|-------------------------|----------------|----------------|-----------------|
| A0  |      |                         | Jenny 08/30/22 | Lucas 08/30/22 | Ray 08/30/22    |



Conn.

Type C Plug

Wiring Diagram



|  |  |  |  |  |  |                                   |  |  |            |
|--|--|--|--|--|--|-----------------------------------|--|--|------------|
| TITLE<br>USB 3.1 Type C Plastic C2 Panel Jack With Type C Plug |  |  |  |  |  | DRAWING NUMBER<br>RR-11C401-01-XX |  |  | REV.<br>A0 |
|--|--|--|--|--|--|-----------------------------------|--|--|------------|

|                        |      |       |                |                |                |                         |                             |      |       |
|------------------------|------|-------|----------------|----------------|----------------|-------------------------|-----------------------------|------|-------|
|                        | B    | 1:1   | Jenny 08/30/22 | Lucas 08/30/22 | Ray 08/30/22   | X.X ± 0.5<br>X.XX ± 0.2 | X.XXX ± 0.05<br>ANGLES ± 1° | mm   | 2/2   |
| THIRD ANGLE PROJECTION | SIZE | SCALE | DRAW / DATE    | CHECK / DATE   | APPROVE / DATE | TOLERANCES              |                             | UNIT | SHEET |

THE INFORMATION CONTAINED HEREIN IS THE PROPRIETARY INFORMATION OF RR BUSINESS VENTURES, LLC. THE POSSESSOR AGREES TO THE FOLLOWING

1. MAINTAIN THIS DOCUMENT IN CONFIDENCE
2. NOT TO REPRODUCE OR COPY IT
3. NOT TO REVEAL OR PUBLISH IT IN WHOLE OR IN PART

COPYRIGHT © 2019

1

2

3

4