

1

2

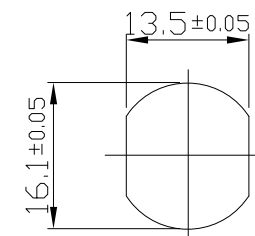
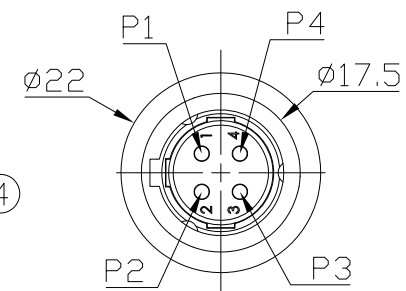
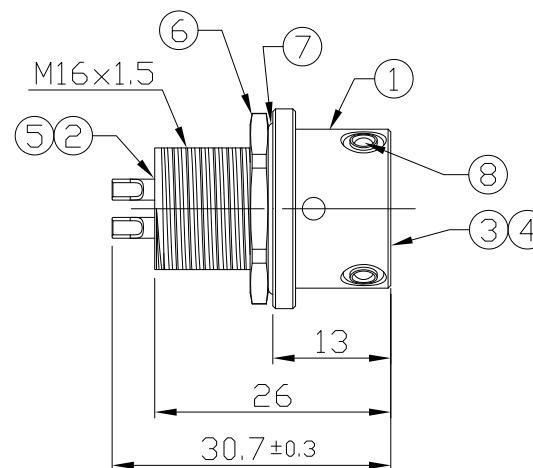
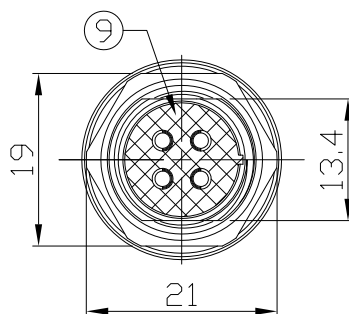
3

4

Notes: (Unless Otherwise Specified)

- 1. WaterProof Rate: IP68
- 2. Recommend Panel Thickness: 0.8 to 8.0 mm
- 3. Recommend Torque: 9~10 Kgf-cm
- 4. Durability: 100 Cycles Min.
- 5. DWV: 1400 Vrms
- 6. Rated Voltage: 250V AC/DC
- 7. Insulation Resistance: 100 MΩ Min.
- 8. RoHS Compliant.

REV	ECN#	DESCRIPTION OF REVISION	DRAW BY DATE	CHECK BY DATE	APPROVE BY DATE
A0		Mass Production	Joyce 08/24/16	Lucas 08/24/16	Ray 08/24/16



Recommended Panel Cut-Out

DOC.CENTER.ISSUE
AUG.25.2016
ONLY FOR RELEASE

9	Glue	Epoxy Color: Black	
8	Metal Ball	SUS Finish:-	3
7	O-Ring	Silicone Color: Gray	1
6	Metal Hex Nut	Copper Alloy Finish: Ni Plated	1
5	Base	Thermoplastic Color: Black	1
4	Contacts	Copper Alloy Finish: Au Plated	4
3	O-Ring	Silicone Color: Gray	1
2	Housing	Thermoplastic Color: Black	1
1	Metal Body	Copper Alloy Finish: Ni Plated	1
Item	Part Name	Material / Finish	Qty

TITLE					DRAWING NUMBER			REV.	
Push Lock S3 10A 4P Panel Rear Mount Male Solder					RR-261301-04040			A0	
	B	1:1	Joyce 08/24/16	Lucas 08/24/16	Ray 08/24/16	X.X ± 0.5 X.XX ± 0.2	X.XXX ± 0.05 ANGLES ± 1°	mm	1/1
THIRD ANGLE PROJECTION	SIZE	SCALE	DRAW / DATE	CHECK / DATE	APPROVE / DATE	TOLERANCES		UNIT	SHEET

USB FIREWIRE.com

THE INFORMATION CONTAINED HEREIN IS THE PROPRIETARY INFORMATION OF RR BUSINESS VENTURES, LLC. THE POSSESSOR AGREES TO THE FOLLOWING

1. MAINTAIN THIS DOCUMENT IN CONFIDENCE
2. NOT TO REPRODUCE OR COPY IT
3. NOT TO REVEAL OR PUBLISH IT IN WHOLE OR IN PART

COPYRIGHT © 2019

1

2

3

4