

1

2

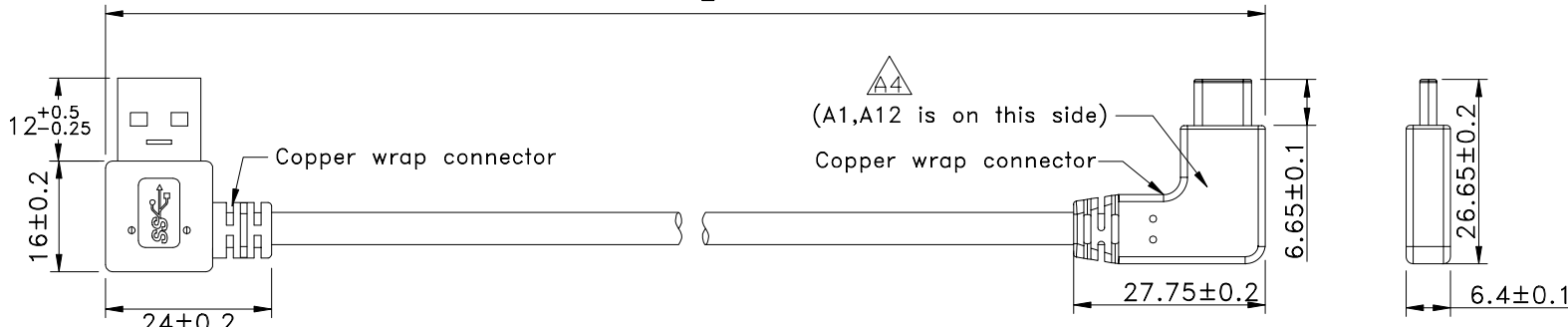
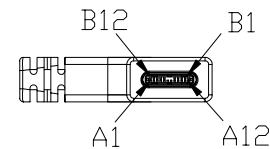
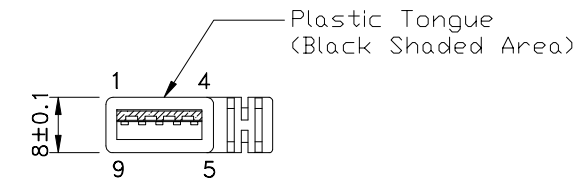
3

4

Note:

1.Type C AB面接點需跟圖面一致.

REV	ECN#	DESCRIPTION OF REVISION	DRAW BY DATE	CHECK BY DATE	APPROVE BY DATE
A4	ECN-190630	Increase drawing requirements	Lucas 07/09/19	Lucas 07/09/19	Ray 07/09/19

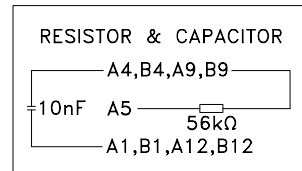


GTC  
DOC.CENTER.ISSUE  
JUL.09.2019  
ONLY FOR  
RELEASE

USB3.0 A MALE  
RIGHT ANGLE RIGHT  
MOLDED BLACK  
(P1)

PIN OUT	
P1	P2
1 — RED	A4,B4,A9,B9
2 — WHITE	A7
3 — GREEN	A6
4 — BLACK	A1,B1,A12,B12
5 — BLUE	A3
6 — YELLOW	A2
7 — DRAIN	
8 — PURPLE	B10
9 — ORANGE	B11
SHELL — DRAIN+BRAID	SHELL

USB TYPE C M  
RIGHT ANGLE RIGHT/LEFT  
MOLDED BLACK  
(P2)



P/N	LENGTH
RR-ARCH-05GRC	127 <sup>+20</sup> <sub>-0</sub>
RR-ARCH-10GRC	255 <sup>+20</sup> <sub>-0</sub>
RR-ARCH-15GRC	381 <sup>+30</sup> <sub>-0</sub>
RR-ARCH-25GRC	635 <sup>+30</sup> <sub>-0</sub>
RR-ARCH-40GRC	1016 <sup>+40</sup> <sub>-0</sub>

TITLE	DRAWING NUMBER	REV.
USB3.0 AM RIGHT ANGLE RIGHT TO USB3.1 C TYPE MALE RIGHT ANGLE RIGHT/LEFT	RR-ARCH-XXGRC	A4

THIRD ANGLE PROJECTION	SIZE	SCALE	DRAW / DATE	CHECK / DATE	APPROVE / DATE	TOLERANCES	UNIT	SHEET
	B	1:1	Lucas 12/28/15	Ray 12/28/15	Ray 12/28/15	X.X ± 0.5 X.XX ± 0.2 X.XXX ± 0.05 ANGLES ± 1°	mm	1/3

THE INFORMATION CONTAINED HEREIN IS THE PROPRIETARY INFORMATION OF RR BUSINESS VENTURES, LLC. THE POSSESSOR AGREES TO THE FOLLOWING:

1. MAINTAIN THIS DOCUMENT IN CONFIDENCE
2. NOT TO REPRODUCE OR COPY IT
3. NOT TO REVEAL OR PUBLISH IT IN WHOLE OR IN PART

COPYRIGHT © 2019

1

2

3

4

1

2

3

4

REV	ECN#	DESCRIPTION OF REVISION	DRAW BY DATE	CHECK BY DATE	APPROVE BY DATE
A4	ECN-190630	Increase drawing requirements	Lucas 07/09/19	Lucas 07/09/19	Ray 07/09/19

\*\*\*CONSTRUCTION:

1.CABLE: \* UL2725 (1P/30#+EAM)\*2+(1P/30#)+(2C/24#)+AEB(AL)65% OD:5.0mm  
BLACK PVC JACKET.

\*\*\*CONNECTOR:

2.USB A/M: \* USB A "3.0" TYPE 9PIN MALE SOLDER TYPE. (SWEETRAY P/N:CHUSB3AM03B)  
\* PINS: 30u GOLD PLATED OVER NICKEL.  
\* INSULATOR: BLUE COLOR P.B.T UL 94V-0 RATED.  
\* SHELL: STEEL WITH GOLD FLASH .  
\* MOLDED: BLACK PVC 45P.

3.USB C/M: \* USB TYPE C MALE SOLDER TYPE.  
\* PINS: 30u GOLD PLATED OVER NICKEL.  
\* INSULATOR: BLACK THERMOPLASTIC UL 94V-0.  
\* SHELL: STEEL WITH GOLD FLASH.  
\* RESISTOR(56KΩ) AND CAPACITOR.  
\* MOLDED: BLACK PVC 45P.

4.TEST: \* CT: 2 ohm IS: 5M ohm DC300V 0.1S

5.PACKING: \* PACK EACH CABLE IN A POLY BAG AND 25PCS IN A POLY BAG.

6.MATERIAL: \* MATERIAL WITH RoHS GRADE.



TITLE			DRAWING NUMBER			REV.	
USB3.0 AM RIGHT ANGLE RIGHT TO USB3.1 C TYPE MALE RIGHT ANGLE RIGHT/LEFT			RR-ARCH-XXGRC			A4	

 DO NOT SCALE DRAWINGS	B	1:1	Lucas 12/28/15	Ray 12/28/15	Ray 12/28/15	XX ± 0.5 X.XX ± 0.2	XXX ± 0.05 ANGLES ± 1°	mm	2/3
	THIRD ANGLE PROJECTION	SIZE	SCALE	DRAW / DATE	CHECK / DATE	APPROVE / DATE	TOLERANCES	UNIT	SHEET

THE INFORMATION CONTAINED HEREIN IS THE PROPRIETARY INFORMATION OF RR BUSINESS VENTURES, LLC. THE POSSESSOR AGREES TO THE FOLLOWING

1. MAINTAIN THIS DOCUMENT IN CONFIDENCE
2. NOT TO REPRODUCE OR COPY IT
3. NOT TO REVEAL OR PUBLISH IT IN WHOLE OR IN PART

COPYRIGHT © 2019

1

2

3

4