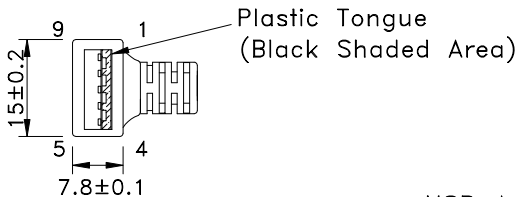
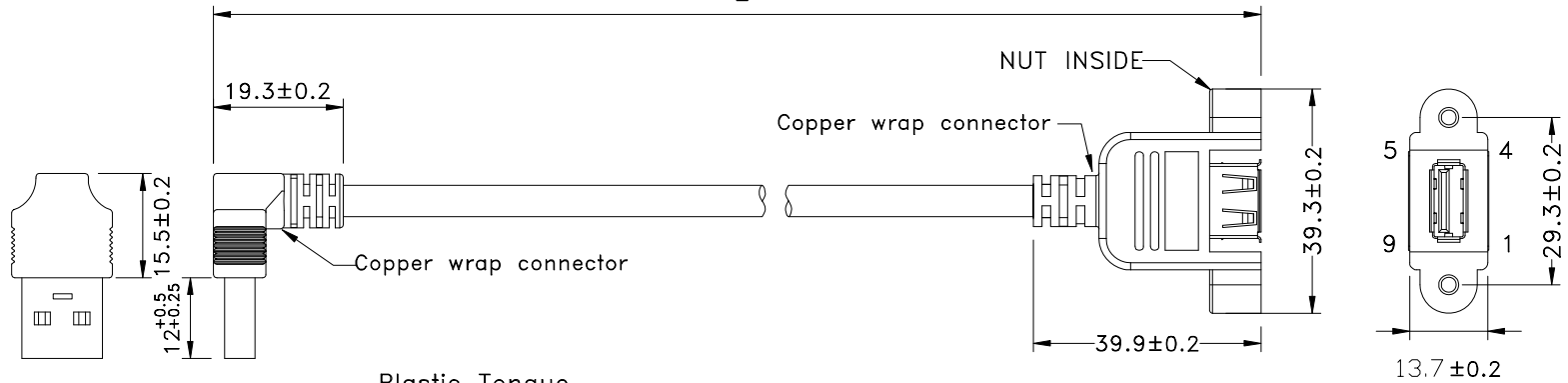


REV	ECN#	DESCRIPTION OF REVISION	DRAW BY DATE	CHECK BY DATE	APPROVE BY DATE
A0		Mass Production	Lucas 09/29/14	Ray 09/29/14	Ray 09/29/14

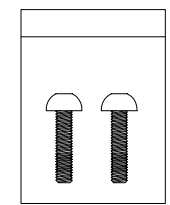


USB3.0 A MALE
RIGHT ANGLE DOWN
MOLDED BLACK

USB A 3.0 FEMALE
MOLDED BLACK

FRONT VIEW

PIN OUT	
USB A M	USB A F
1 — RED	1
2 — WHITE	2
3 — GREEN	3
4 — BLACK	4
5 — BLUE	5
6 — YELLOW	6
7 — DRAIN	7
8 — PURPLE	8
9 — ORANGE	9
SHEEL — BRAID	SHEEL



DOC.CENTER.ISSUE
SEP.29.2014
ONLY FOR
RELEASE

P/N	LENGTH
RR-ADAFPM-06GR	153 ⁺²⁰ ₋₀
RR-ADAFPM-12GR	305 ⁺²⁰ ₋₀
RR-ADAFPM-24GR	610 ⁺³⁰ ₋₀

TITLE USB3.0 AM DOWN ANGLE TO A FEMALE					DRAWING NUMBER RR-ADAFPM-XXGR			REV. A0	
DO NOT SCALE DRAWINGS	B	1:1	Lucas 09/29/14	Ray 09/29/14	Ray 09/29/14	X.X ± 0.5 X.XX ± 0.2	X.XXX ± 0.05 ANGLES ± 1°	mm	1/3
THIRD ANGLE PROJECTION	SIZE	SCALE	DRAW / DATE	CHECK / DATE	APPROVE / DATE	TOLERANCES		UNIT	SHEET

www.USBFireWire.com

NOTICE OF PROPRIETARY PROPERTY:
THE INFORMATION CONTAINED HEREIN IS THE PROPRIETARY PROPERTY OF USBFIREWIRE.COM THE POSSESSOR AGREES TO THE FOLLOWING:
(C) TO MAINTAIN THIS DOCUMENT IN CONFIDENCE
(D) NOT TO REPRODUCE OR COPY IT
(E) NOT TO REVEAL OR PUBLISH IT IN WHOLE OR PART

1 2 3 4

L

1 2 3 4

1

2

3

4

REV	ECN#	DESCRIPTION OF REVISION	DRAW BY DATE	CHECK BY DATE	APPROVE BY DATE
A0		Mass Production	Lucas 09/29/14	Ray 09/29/14	Ray 09/29/14

***CONSTRUCTION:

1.CABLE: * UL2725 (1PR/28#+EAM)*2+(1PR/28#+A)+2C/24#+AB85%
 OD:5.5mm BLACKE JACKET (REV:3.0)

***CONNECTOR:

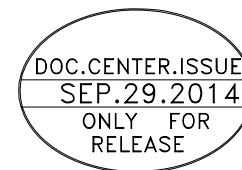
2.USB A/M: * USB A "3.0" TYPE 9PIN MALE SOLDER TYPE. (SWEETRAY P/N:CHUSB3AM03B)
 * PINS: 30u GOLD PLATED OVER NICKEL.
 * SHELL: STEEL WITH GOLD FLASH .
 * INSULATOR: BLUE COLOR P.B.T UL 94V-0 RATED.
 * MOLDED BLACK PVC 45P.

3.USB A/F: * USB A "3.0" TYPE 9PIN FEMALE SOLDER TYPE.(XKJX P/N:CU3F009S16T00R)
 * PINS: 30u GOLD PLATED OVER NICKEL.
 * SHELL: BRASS WITH GOLD FLASH .
 * INSULATOR: BLUE COLOR P.B.T UL 94V-0 RATED.
 * SCREW: 5.0*11mm, NUT:4.75x1.8mm #4-40UNC .
 * MOLDED BLACK PVC 30P.

4.TEST: * CT: 2 ohm IS: 5M ohm.

5.PACKING: * PACK EACH CABLE IN A POLY BAG AND 25PCS IN A POLY BAG.

6.MATERIAL: * MATERIAL WITH RoHS GRADE.



www.USBFireWire.com

NOTICE OF PROPRIETARY PROPERTY:

THE INFORMATION CONTAINED HEREIN IS THE PROPRIETARY PROPERTY OF USBFIREWIRE.COM THE POSSESSOR AGREES TO THE FOLLOWING:
 (1) TO MAINTAIN THIS DOCUMENT IN CONFIDENCE
 (2) NOT TO REPRODUCE OR COPY IT
 (3) DID NOT TO REVEAL OR PUBLISH IT IN WHOLE OR PART

TITLE USB3.0 AM DOWN ANGLE TO A FEMALE					DRAWING NUMBER RR-ADAFPM-XXGR			REV. A0
	B	1:1	Lucas 09/29/14	Ray 09/29/14	Ray 09/29/14	XX ± 0.5 XXX ± 0.2	XXX ± 0.05 ANGLES ± 1°	mm 2/3
THIRD ANGLE PROJECTION	SIZE	SCALE	DRAW / DATE	CHECK / DATE	APPROVE / DATE	TOLERANCES		UNIT SHEET

1

2

3

4