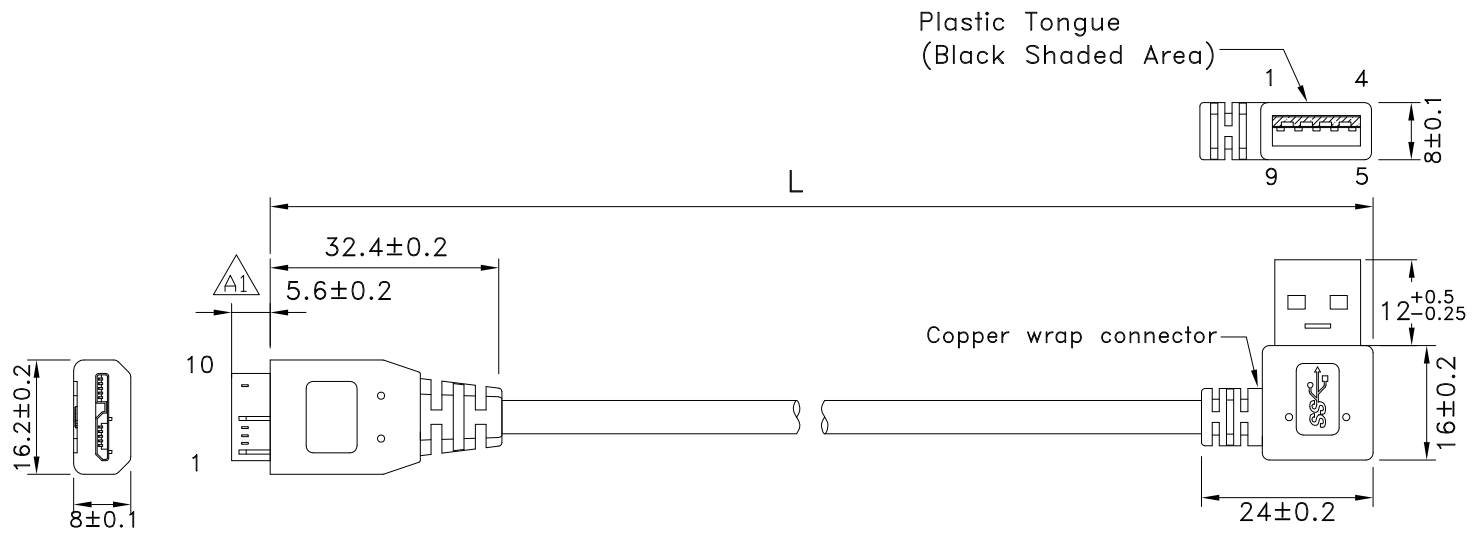


REV	ECN#	DESCRIPTION OF REVISION	DRAW BY DATE	CHECK BY DATE	APPROVE BY DATE
A1	ECN-180917	Modify Drawing	Lucas 10/03/18	Lucas 10/03/18	Ray 10/03/18



FRONT VIEW

Micro-USB 3.0 BM
MOLDDED BLACK

PIN OUT
Micro-USB3.0 BM USB A M

USB A MALE
RIGHT ANGLE LEFT
MOLDDED BLACK

1	RED	1
2	WHITE	2
3	GREEN	3
5	BLACK	4
6	BLUE	5
7	YELLOW	6
8	DRAIN	7
9	PURPLE	8
10	ORANGE	9
SHEEL	BRAID	SHEEL



P/N	LENGTH
RR-ALMS-10GR	255 ⁺³⁰ ₀

TITLE						DRAWING NUMBER			REV.	
Micro USB3.0 B MALE TO USB3.0 AM RIGHT-ANGLE LEFT						RR-ALMS-XXGR			A1	
THIRD ANGLE PROJECTION	SIZE	SCALE	DRAW / DATE	CHECK / DATE	APPROVE / DATE	TOLERANCES	UNIT	SHEET		
	B	1:1	Lucas 09/02/14	Ray 09/02/14	Ray 09/02/14	XX ± 0.5 X.XX ± 0.2	mm	1/3		
						X.XXX ± 0.05 ANGLES ± 1°				

USB FIREWIRE.com

THE INFORMATION CONTAINED HEREIN IS PROPRIETARY AND CONFIDENTIAL TO RR BUSINESS VENTURES, LLC. THE POSSESSOR AGREES TO THE FOLLOWING

1. MAINTAIN THIS DOCUMENT IN CONFIDENCE
2. NOT TO REPRODUCE OR COPY IT
3. NOT TO REVEAL OR PUBLISH IT IN WHOLE OR PART

1

2

3

4

REV	ECN#	DESCRIPTION OF REVISION	DRAW BY DATE	CHECK BY DATE	APPROVE BY DATE
A1	ECN-180917	Modify Drawing	Lucas 10/03/18	Lucas 10/03/18	Ray 10/03/18

***CONSTRUCTION:

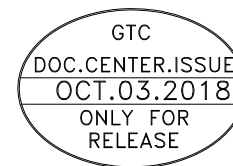
1.CABLE: * UL2725 (1PR/28#+EAM)*2+(1PR/28#+A)+2C/24#+AB85%
OD:5.5mm BLACKE JACKET (REV:3.0)

***CONNECTOR:

2.USB A/M: * USB A "3.0" TYPE 9PIN MALE SOLDER TYPE.(SWEETRAY P/N:CHUSB3AM03B)
* PINS: 30u GOLD PLATED OVER NICKEL.
* SHELL: STEEL WITH GOLD FLASH .
* INSULATOR: BLUE COLOR P.B.T UL 94V-0 RATED.
* MOLDED BLACK PVC 45P.

3.Micro-USB B/M: * MICRO-USB B "3.0" TYPE 10PIN MALE SOLDER TYPE.(SWEETRAY P/N:CHMICROUSB3BM01E)
* PINS: 30u GOLD PLATED OVER NICKEL.
* SHELL: STEEL WITH GOLD FLASH .
* INSULATOR: BLACK COLOR P.B.T UL 94V-0 RATED.
* MOLDED BLACK PVC 45P.

4.TEST: * CT: 2 ohm IS: 5M ohm.
5.PACKING: * PACK EACH CABLE IN A POLY BAG AND 25PCS IN A POLY BAG.
6.MATERIAL: * MATERIAL WITH RoHS GRADE.



TITLE Micro USB3.0 B MALE TO USB3.0 AM RIGHT-ANGLE LEFT						DRAWING NUMBER RR-ALMS-XXGR			REV. A1
	B	1:1	Lucas 09/02/14	Ray 09/02/14	Ray 09/02/14	X.X ± 0.5 X.XX ± 0.2	X.XXX ± 0.05 ANGLES ± 1°	mm	2/3
THIRD ANGLE PROJECTION	SIZE	SCALE	DRAW / DATE	CHECK / DATE	APPROVE / DATE	TOLERANCES		UNIT	SHEET

THE INFORMATION CONTAINED HEREIN IS PROPRIETARY AND CONFIDENTIAL TO RR BUSINESS VENTURES, LLC. THE POSSESSOR AGREES TO THE FOLLOWING
1. MAINTAIN THIS DOCUMENT IN CONFIDENCE
2. NOT TO REPRODUCE OR COPY IT
3. NOT TO REVEAL OR PUBLISH IT IN WHOLE OR PART

1

2

3

4

1

2

3

4

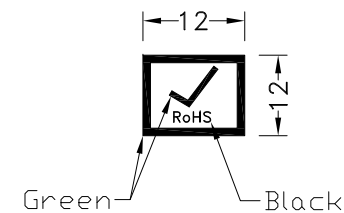
REV	ECN#	DESCRIPTION OF REVISION	DRAW BY DATE	CHECK BY DATE	APPROVE BY DATE
A1	ECN-180917	Modify Drawing	Lucas 10/03/18	Lucas 10/03/18	Ray 10/03/18

P/N	LENGTH(mm)	PE BAG(Inch)	PACKAGE
RR-ALMS-10GR	255 ⁺³⁰ ₋₀	5.5"*10	(1)

PE BAG LABEL

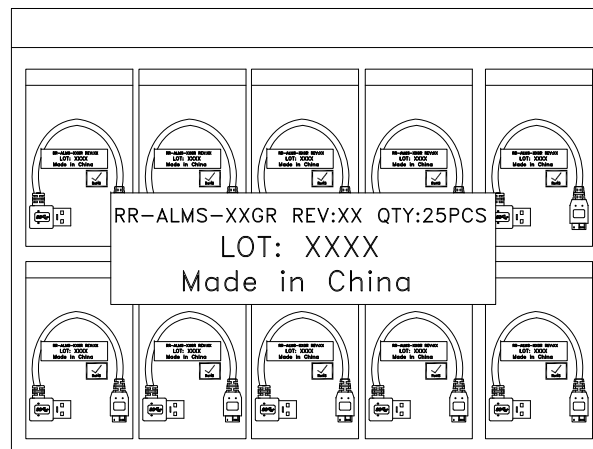
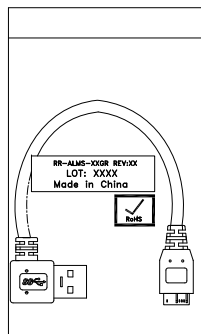


RoHS LABEL



NOTES:PACK EACH CABLE IN A POLY BAG AND 25PCS IN A POLY BAG.

PACK(1)



GTC
DOC.CENTER.ISSUE
OCT.03.2018
ONLY FOR
RELEASE

TITLE Micro USB3.0 B MALE TO USB3.0 AM RIGHT-ANGLE LEFT					DRAWING NUMBER RR-ALMS-XXGR			REV. A1	
	B	1:1	Lucas 09/02/14	Ray 09/02/14	Ray 09/02/14	X.X ± 0.5 X.XX ± 0.2	X.XXX ± 0.05 ANGLES ± 1°	mm	3/3
THIRD ANGLE PROJECTION	SIZE	SCALE	DRAW / DATE	CHECK / DATE	APPROVE / DATE	TOLERANCES		UNIT	SHEET

THE INFORMATION CONTAINED HEREIN IS PROPRIETARY AND CONFIDENTIAL TO RR BUSINESS VENTURES, LLC. THE POSSESSOR AGREES TO THE FOLLOWING

1. MAINTAIN THIS DOCUMENT IN CONFIDENCE
2. NOT TO REPRODUCE OR COPY IT
3. NOT TO REVEAL OR PUBLISH IT IN WHOLE OR PART

1

2

3

4