

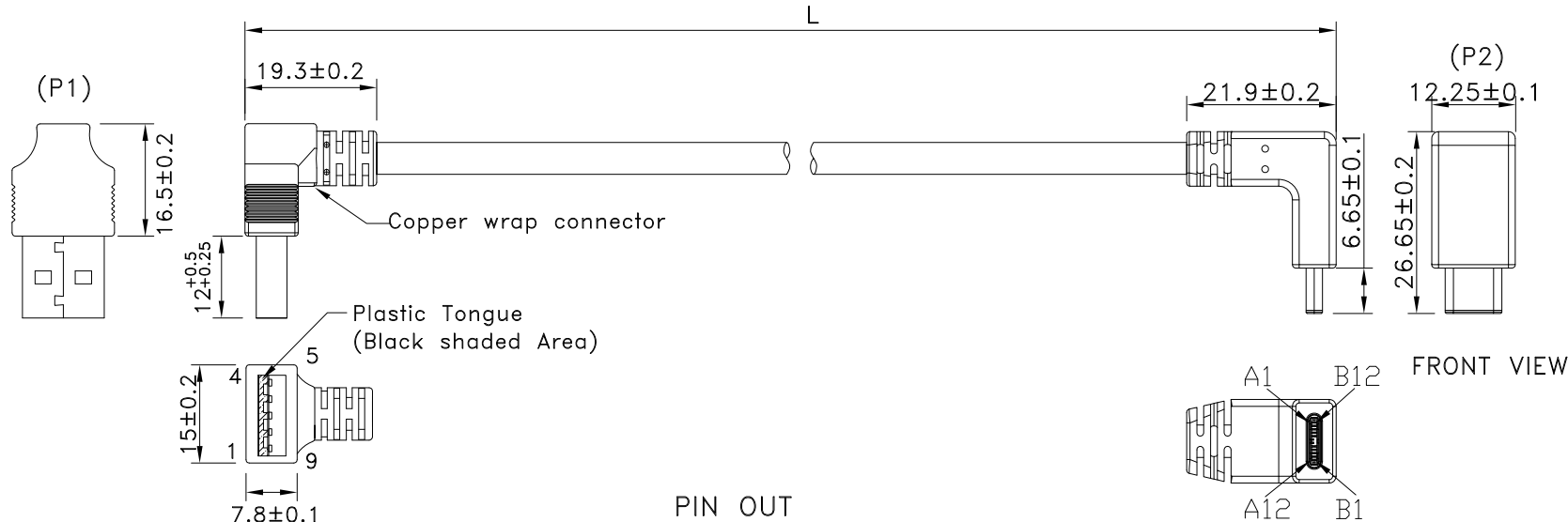
1

2

3

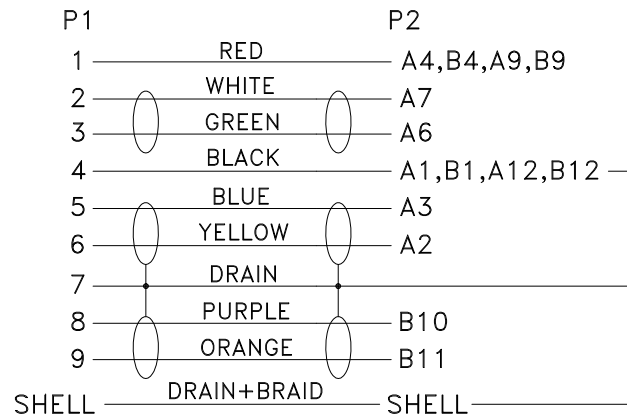
4

REV	ECN#	DESCRIPTION OF REVISION	DRAW BY DATE	CHECK BY DATE	APPROVE BY DATE
A1	ECN-160513	Change Type C Connector	Lucas 05/31/16	Ray 05/31/16	Ray 05/31/16



USB3.0 A MALE
RIGHT ANGLE UP
MOLDED BLACK

PIN OUT




USB TYPE C M
RIGHT ANGLE UP/DOWN
MOLDED BLACK

GTC
DOC.CENTER.ISSUE
JUN.01.2016
ONLY FOR
RELEASE

P/N	LENGTH
RR-AUCV-05G	127 ⁺²⁰ ₋₀
RR-AUCV-10G	255 ⁺²⁰ ₋₀
RR-AUCV-15G	381 ⁺³⁰ ₋₀
RR-AUCV-25G	635 ⁺³⁰ ₋₀
RR-AUCV-40G	1016 ⁺⁴⁰ ₋₀

TITLE USB3.0 AM RIGHT ANGLE UP TO USB3.1 C TYPE MALE RIGHT ANGLE UP/DOWN					DRAWING NUMBER RR-AUCV-XXG			REV. A1	
DO NOT SCALE DRAWINGS	B	1:1	Lucas 12/28/15	Ray 12/28/15	Ray 12/28/15	X.X ± 0.5 X.XX ± 0.2	X.XXX ± 0.05 ANGLES ± 1°	mm	1/3
THIRD ANGLE PROJECTION	SIZE	SCALE	DRAW / DATE	CHECK / DATE	APPROVE / DATE	TOLERANCES		UNIT	SHEET



THE INFORMATION CONTAINED HEREIN IS THE PROPRIETARY INFORMATION OF RR BUSINESS VENTURES, LLC. THE POSSESSOR AGREES TO THE FOLLOWING

1. MAINTAIN THIS DOCUMENT IN CONFIDENCE
2. NOT TO REPRODUCE OR COPY IT
3. NOT TO REVEAL OR PUBLISH IT IN WHOLE OR IN PART

COPYRIGHT © 2019

1

2

3

4

1

2

3

4

REV	ECN#	DESCRIPTION OF REVISION	DRAW BY DATE	CHECK BY DATE	APPROVE BY DATE
A1	ECN-160513	Change Type C Connector	Lucas 05/31/16	Ray 05/31/16	Ray 05/31/16

***CONSTRUCTION:

1.CABLE: * UL2725 (1P/30#+EAM)*2+(1P/30#)+(2C/24#)+AEB(AL)65% OD:5.0mm
BLACK PVC JACKET.

***CONNECTOR:

2.USB A/M: * USB A "3.0" TYPE 9PIN MALE SOLDER TYPE. (SWEETRAY P/N:CHUSB3AM03B)

- * PINS: 30u GOLD PLATED OVER NICKEL.
- * INSULATOR: BLUE COLOR P.B.T UL 94V-0 RATED.
- * SHELL: STEEL WITH GOLD FLASH .
- * MOLDED: BLACK PVC 45P.

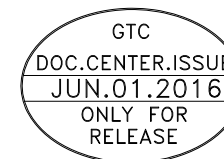
3.USB C/M: * USB TYPE C MALE SOLDER TYPE,DEREN OR EQUIVALENT

- * PINS: 30u GOLD PLATED OVER NICKEL.
- * INSULATOR: BLACK THERMOPLASTIC UL 94V-0.
- * SHELL: STEEL WITH GOLD FLASH.
- * RESISTOR(56KΩ) AND CAPACITOR(10nF 30V).
- * MOLDED: BLACK PVC 45P.

4.TEST: * CT: 2 ohm IS: 5M ohm

5.PACKING: * PACK EACH CABLE IN A POLY BAG AND 25PCS IN A POLY BAG.

6.MATERIAL: * MATERIAL WITH RoHS GRADE.



TITLE USB3.0 AM RIGHT ANGLE UP TO USB3.1 C TYPE MALE RIGHT ANGLE UP/DOWN			DRAWING NUMBER RR-AUCV-XXG			REV. A1			
DD NOT SCALE DRAWINGS	B	1:1	Lucas 12/28/15	Ray 12/28/15	Ray 12/28/15	X.X ± 0.5 X.XX ± 0.2	X.XXX ± 0.05 ANGLES ± 1°	mm	2/3
THIRD ANGLE PROJECTION	SIZE	SCALE	DRAW / DATE	CHECK / DATE	APPROVE / DATE	TOLERANCES		UNIT	SHEET

THE INFORMATION CONTAINED HEREIN IS THE PROPRIETARY INFORMATION OF RR BUSINESS VENTURES, LLC. THE POSSESSOR AGREES TO THE FOLLOWING

1. MAINTAIN THIS DOCUMENT IN CONFIDENCE
2. NOT TO REPRODUCE OR COPY IT
3. NOT TO REVEAL OR PUBLISH IT IN WHOLE OR IN PART

COPYRIGHT © 2019

1

2

3

4

1

2

3

4

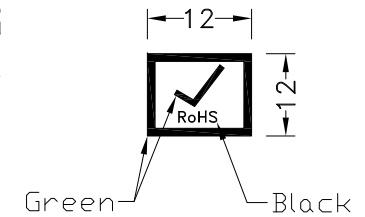
REV	ECN#	DESCRIPTION OF REVISION	DRAW BY DATE	CHECK BY DATE	APPROVE BY DATE
A1	ECN-160513	Change Type C Connector	Lucas 05/31/16	Ray 05/31/16	Ray 05/31/16

P/N	LENGTH(mm)	PE BAG(Inch)	PACKAGE
RR-AUCV-05G	127 ⁺²⁰ ₋₀	5.5"*10	(1)
RR-AUCV-10G	255 ⁺²⁰ ₋₀	5.5"*10	(2)
RR-AUCV-15G	381 ⁺³⁰ ₋₀	5.5"*10	(2)
RR-AUCV-25G	635 ⁺³⁰ ₋₀	5.5"*10	(2)
RR-AUCV-40G	1016 ⁺⁴⁰ ₋₀	5.5"*10	(2)

PE BAG LABEL

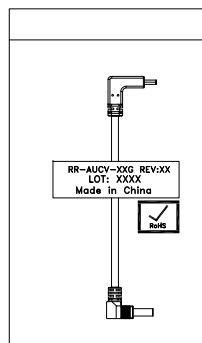


RoHS LABEL

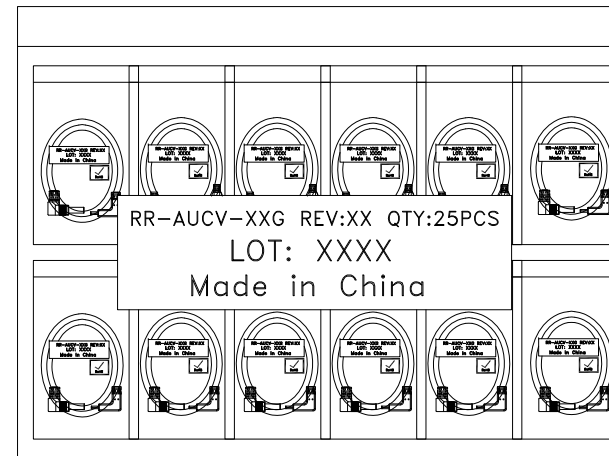
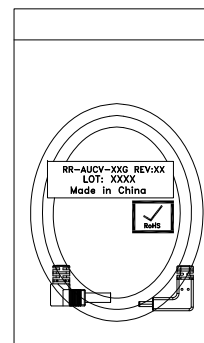


NOTES:PACK EACH CABLE IN A POLY BAG AND 25PCS IN A POLY BAG.

PACK(1)



PACK(2)



TITLE
USB3.0 AM RIGHT ANGLE UP TO USB3.1 C TYPE MALE RIGHT ANGLE UP/DOWN

DRAWING NUMBER
RR-AUCV-XXG

REV.
A1

	B	1:1	Lucas 12/28/15	Ray 12/28/15	Ray 12/28/15	X.X ± 0.5 X.XX ± 0.2	X.XXX ± 0.05 ANGLES ± 1°	mm	3/3
THIRD ANGLE PROJECTION	SIZE	SCALE	DRAW / DATE	CHECK / DATE	APPROVE / DATE	TOLERANCES		UNIT	SHEET



THE INFORMATION CONTAINED HEREIN IS THE PROPRIETARY INFORMATION OF RR BUSINESS VENTURES, LLC. THE POSSESSOR AGREES TO THE FOLLOWING

1. MAINTAIN THIS DOCUMENT IN CONFIDENCE
2. NOT TO REPRODUCE OR COPY IT
3. NOT TO REVEAL OR PUBLISH IT IN WHOLE OR IN PART

COPYRIGHT © 2019

1

2

3

4