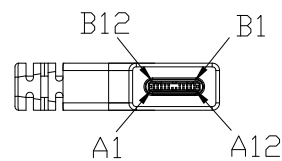
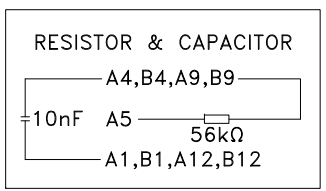
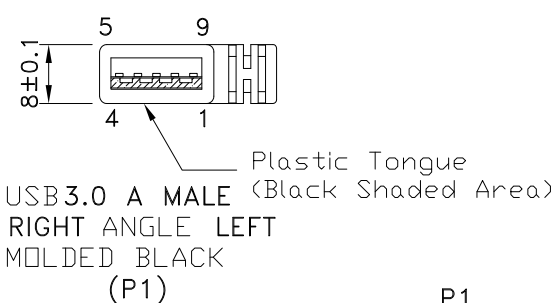
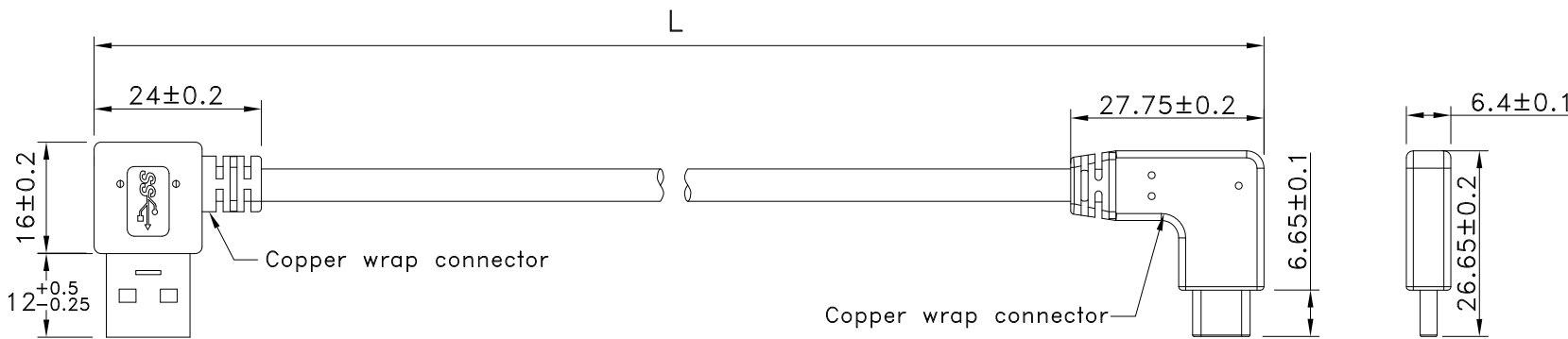


Note:

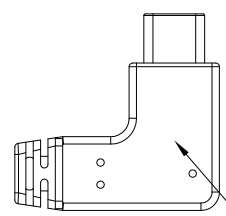
1.Type C AB面接點需跟圖面一致.

REV	ECN#	DESCRIPTION OF REVISION	DRAW BY DATE	CHECK BY DATE	APPROVE BY DATE
A6	ECN-191213	improve type C plug molding	Lucas 12/25/19	Lucas 12/25/19	Ray 12/25/19



FRONT VIEW

GTC  
DOC.CENTER.ISSUE  
JAN.15.2020  
ONLY FOR RELEASE



△ USB TYPE C M  
RIGHT ANGLE RIGHT/LEFT  
MOLDED BLACK  
(P2)

PIN OUT

P1		P2
1	RED	A4, B4, A9, B9
2	WHITE	A7
3	GREEN	A6
4	BLACK	A1, B1, A12, B12
5	BLUE(YELLOW MYLAR)	A3
6	YELLOW(YELLOW MYLAR)	A2
7	DRAIN	
8	BLUE(GREEN MYLAR)	B10
9	YELLOW(GREEN MYLAR)	B11
SHELL	DRAIN+BRAID	SHELL

P/N	LENGTH
RR-ALCH-05GRC	127 <sup>+20</sup> <sub>-0</sub>
RR-ALCH-07GRC	178 <sup>+20</sup> <sub>-0</sub>
RR-ALCH-10GRC	255 <sup>+20</sup> <sub>-0</sub>
RR-ALCH-15GRC	381 <sup>+30</sup> <sub>-0</sub>
RR-ALCH-25GRC	635 <sup>+30</sup> <sub>-0</sub>
RR-ALCH-40GRC	1016 <sup>+40</sup> <sub>-0</sub>

TITLE	DRAWING NUMBER	REV.
USB3.0 AM RIGHT ANGLE LEFT TO USB3.1 C TYPE MALE RIGHT ANGLE RIGHT/LEFT	RR-ALCH-XXGRC	A6

DD NOT SCALE DRAWINGS	B	1:1	Lucas 12/28/15	Ray 12/28/15	Ray 12/28/15	X.X ± 0.5 X.XX ± 0.2	X.XXX ± 0.05 ANGLES ± 1°	mm	1/3
THIRD ANGLE PROJECTION	SIZE	SCALE	DRAW / DATE	CHECK / DATE	APPROVE / DATE	TOLERANCES		UNIT	SHEET

THE INFORMATION CONTAINED HEREIN IS THE PROPRIETARY INFORMATION OF RR BUSINESS VENTURES, LLC. THE POSSESSOR AGREES TO THE FOLLOWING

1. MAINTAIN THIS DOCUMENT IN CONFIDENCE
2. NOT TO REPRODUCE OR COPY IT
3. NOT TO REVEAL OR PUBLISH IT IN WHOLE OR IN PART

COPYRIGHT © 2019

1

2

3

4

REV	ECN#	DESCRIPTION OF REVISION	DRAW BY DATE	CHECK BY DATE	APPROVE BY DATE
A6	ECN-191213	improve type C plug molding	Lucas 12/25/19	Lucas 12/25/19	Ray 12/25/19

\*\*\*CONSTRUCTION:

1.CABLE: \* UL2725 (1P/30#+EAM)\*2+(1P/30#)+(2C/24#)+AEB(AL)65% OD:5.0mm  
BLACK PVC JACKET.

\*\*\*CONNECTOR:

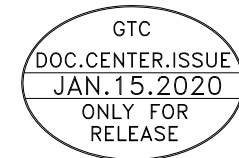
2.USB A/M: \* USB A "3.0" TYPE 9PIN MALE SOLDER TYPE. (SWEETRAY P/N:CHUSB3AM03B)  
\* PINS: 30u GOLD PLATED OVER NICKEL.  
\* INSULATOR: BLUE COLOR P.B.T UL 94V-0 RATED.  
\* SHELL: STEEL WITH GOLD FLASH .  
\* MOLDED: BLACK PVC 45P.

3.USB C/M: \* USB TYPE C MALE SOLDER TYPE.  
\* PINS: 30u GOLD PLATED OVER NICKEL.  
\* INSULATOR: BLACK THERMOPLASTIC UL 94V-0.  
\* SHELL: STEEL WITH GOLD FLASH.  
\* RESISTOR(56KΩ) AND CAPACITOR.  
\* MOLDED: BLACK PVC 45P & 30P.

4.TEST: \* CT: 2 ohm IS: 5M ohm DC300V 0.1S

5.PACKING: \* PACK EACH CABLE IN A POLY BAG AND 25PCS IN A POLY BAG.

6.MATERIAL: \* MATERIAL WITH RoHS GRADE.



TITLE USB3.0 AM RIGHT ANGLE LEFT TO USB3.1 C TYPE MALE RIGHT ANGLE RIGHT/LEFT					DRAWING NUMBER RR-ALCH-XXGRC			REV. A6
--	--	--	--	--	---------------------------------	--	--	------------

	B	1:1	Lucas 12/28/15	Ray 12/28/15	Ray 12/28/15	X.X ± 0.5 X.XX ± 0.2	X.XXX ± 0.05 ANGLES ± 1°	mm	2/3
THIRD ANGLE PROJECTION	SIZE	SCALE	DRAW / DATE	CHECK / DATE	APPROVE / DATE	TOLERANCES		UNIT	SHEET

THE INFORMATION CONTAINED HEREIN IS THE PROPRIETARY INFORMATION OF RR BUSINESS VENTURES, LLC. THE POSSESSOR AGREES TO THE FOLLOWING:  
1. MAINTAIN THIS DOCUMENT IN CONFIDENCE  
2. NOT TO REPRODUCE OR COPY IT  
3. NOT TO REVEAL OR PUBLISH IT IN WHOLE OR IN PART

COPYRIGHT © 2019

1

2

3

4

1

2

3

4

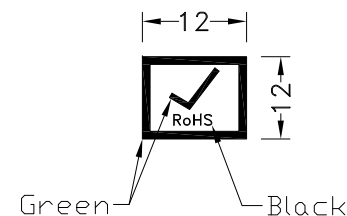
REV	ECN#	DESCRIPTION OF REVISION	DRAW BY DATE	CHECK BY DATE	APPROVE BY DATE
A6	ECN-191213	improve type C plug molding	Lucas 12/25/19	Lucas 12/25/19	Ray 12/25/19

P/N	LENGTH(mm)	PE BAG(Inch)	PACKAGE
RR-ALCH-05GRC	127 <sup>+20</sup> <sub>-0</sub>	5.5"*10	(1)
RR-ALCH-07GRC	178 <sup>+20</sup> <sub>-0</sub>	5.5"*10	(2)
RR-ALCH-10GRC	255 <sup>+20</sup> <sub>-0</sub>	5.5"*10	(2)
RR-ALCH-15GRC	381 <sup>+30</sup> <sub>-0</sub>	5.5"*10	(2)
RR-ALCH-25GRC	635 <sup>+30</sup> <sub>-0</sub>	5.5"*10	(2)
RR-ALCH-40GRC	1016 <sup>+40</sup> <sub>-0</sub>	5.5"*10	(2)

PE BAG LABEL

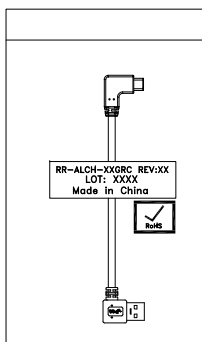


RoHS LABEL

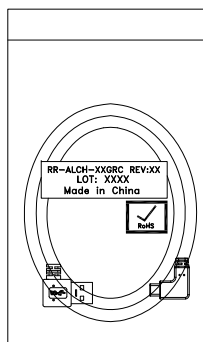


NOTES:PACK EACH CABLE IN A POLY BAG AND 25PCS IN A POLY BAG.

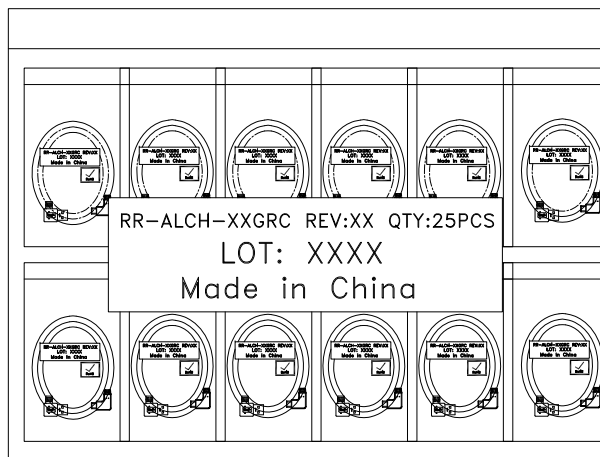
PACK(1)



PACK(2)



GTC  
 DOC.CENTER.ISSUE  
 JAN.15.2020  
 ONLY FOR  
 RELEASE



TITLE USB3.0 AM RIGHT ANGLE LEFT TO USB3.1 C TYPE MALE RIGHT ANGLE RIGHT/LEFT						DRAWING NUMBER RR-ALCH-XXGRC			REV. A6
THIRD ANGLE PROJECTION	SIZE	SCALE	DRAW / DATE	CHECK / DATE	APPROVE / DATE	TOLERANCES		UNIT	SHEET
	B	1:1	Lucas 12/28/15	Ray 12/28/15	Ray 12/28/15	X.X ± 0.5 X.XX ± 0.2	X.XXX ± 0.05 ANGLES ± 1°	mm	3/3

THE INFORMATION CONTAINED HEREIN IS THE PROPRIETARY INFORMATION OF RR BUSINESS VENTURES, LLC. THE POSSESSOR AGREES TO THE FOLLOWING:  
 1. MAINTAIN THIS DOCUMENT IN CONFIDENCE  
 2. NOT TO REPRODUCE OR COPY IT  
 3. NOT TO REVEAL OR PUBLISH IT IN WHOLE OR IN PART

COPYRIGHT © 2019

1

2

3

4