

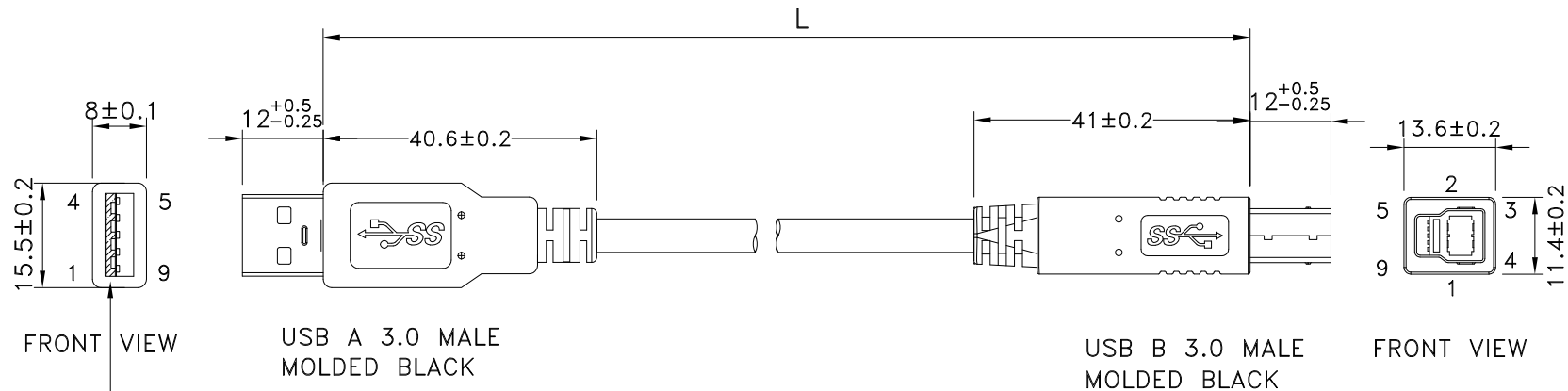
1

2

3

4

REV	ECN#	DESCRIPTION OF REVISION	DRAW BY DATE	CHECK BY DATE	APPROVE BY DATE
A0		Mass Production	Lucas 09/05/14	Ray 09/05/14	Ray 09/05/14



FRONT VIEW

USB A 3.0 MALE
MOLDED BLACK

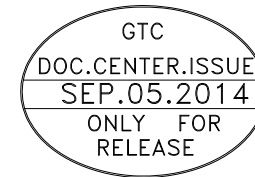
USB B 3.0 MALE
MOLDED BLACK

FRONT VIEW

Plastic Tongue
(Black Shaded Area)

PIN OUT

USB A M		USB B M
1	RED	1
2	WHITE	2
3	GREEN	3
4	BLACK	4
5	BLUE	5
6	YELLOW	6
7	DRAIN	7
8	PURPLE	8
9	ORANGE	9
	SHEEL BRAID SHEEL	



P/N	LENGTH
RR-ASBS-06GR	153 ⁺²⁰ ₋₀
RR-ASBS-10GR	255 ⁺²⁰ ₋₀
RR-ASBS-20GR	508 ⁺³⁰ ₋₀
RR-ASBS-40GR	1016 ⁺⁴⁰ ₋₀
RR-ASBS-78GR	1980 ⁺⁶⁰ ₋₀

TITLE					DRAWING NUMBER			REV.	
USB3.0 A MALE TO B MALE					RR-ASBS-XXGR			A0	
THIRD ANGLE PROJECTION	SIZE	SCALE	DRAW / DATE	CHECK / DATE	APPROVE / DATE	TOLERANCES	UNIT	SHEET	
	B	1:1	Lucas 09/05/14	Ray 09/05/14	Ray 09/05/14	XX ± 0.5 X.XX ± 0.2	mm	1/3	
							ANGLES ± 1°		

USB FIREWIRE.com

THE INFORMATION CONTAINED HEREIN IS PROPRIETARY AND CONFIDENTIAL TO RR BUSINESS VENTURES, LLC. THE POSSESSOR AGREES TO THE FOLLOWING

1. MAINTAIN THIS DOCUMENT IN CONFIDENCE
2. NOT TO REPRODUCE OR COPY IT
3. NOT TO REVEAL OR PUBLISH IT IN WHOLE OR PART

1

2

3

4

1

2

3

4

REV	ECN#	DESCRIPTION OF REVISION	DRAW BY DATE	CHECK BY DATE	APPROVE BY DATE
A0		Mass Production	Lucas 09/05/14	Ray 09/05/14	Ray 09/05/14

***CONSTRUCTION:

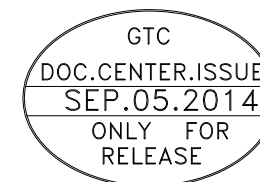
1.CABLE: * UL2725[(1PR/28#+EAM)*2]+(1PR/28#+A)+2C/24#]+AB85%
 OD:5.5mm BLACKE JACKET (REV:3.0)

***CONNECTOR:

2.USB A/M: * USB A "3.0" TYPE 9PIN MALE SOLDER TYPE.(NEW-CONN P/N:06801508M5CA)
 * PINS: 30u GOLD PLATED OVER NICKEL.
 * SHELL: BRASS WITH GOLD FLASH .
 * INSULATOR: BLUE COLOR P.B.T UL 94V-0 RATED.
 * MOLDED BLACK PVC 45P.

3.USB B/M: * USB B "3.0" TYPE 9PIN MALE SOLDER TYPE. (NEW CONN P/N:06800601M5C)
 * PINS: 30u GOLD PLATED OVER NICKEL.
 * SHELL: STEEL WITH GOLD FLASH .
 * INSULATOR: BLUE COLOR P.B.T UL 94V-0 RATED.
 * MOLDED BLACK PVC 45P.

4.TEST: * CT: 2 ohm IS: 5M ohm.
 5.PACKING: * PACK EACH CABLE IN A POLY BAG AND 25PCS IN A POLY BAG.
 6.MATERIAL: * MATERIAL WITH RoHS GRADE.



TITL			DRAWING NUMBER			REV.		
USB3.0 A MALE TO B MALE			RR-ASBS-XXGR			A0		
	B	1:1	Lucas 09/05/14	Ray 09/05/14	Ray 09/05/14	X.X ± 0.5 X.XX ± 0.2	X.XXX ± 0.05 ANGLES ± 1°	mm
THIRD ANGLE PROJECTION	SIZE	SCALE	DRAW / DATE	CHECK / DATE	APPROVE / DATE	TOLERANCES		UNIT
								2/3
								SHEET

THE INFORMATION CONTAINED HEREIN IS PROPRIETARY AND CONFIDENTIAL TO RR BUSINESS VENTURES, LLC. THE POSSESSOR AGREES TO THE FOLLOWING

1. MAINTAIN THIS DOCUMENT IN CONFIDENCE
2. NOT TO REPRODUCE OR COPY IT
3. NOT TO REVEAL OR PUBLISH IT IN WHOLE OR PART

1

2

3

4

1

2

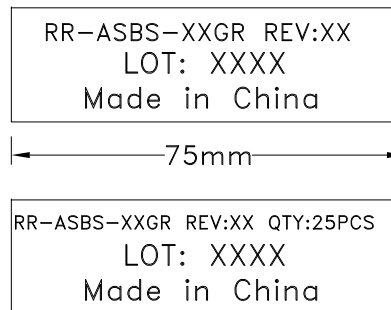
3

4

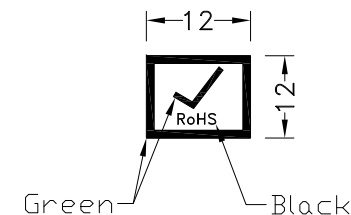
REV	ECN#	DESCRIPTION OF REVISION	DRAW BY DATE	CHECK BY DATE	APPROVE BY DATE
A0		Mass Production	Lucas 09/05/14	Ray 09/05/14	Ray 09/05/14

P/N	LENGTH	PE BAG	PACKAGE
RR-ASBS-06GR	153 ⁺²⁰ ₋₀	5.5"*10	(1)
RR-ASBS-10GR	255 ⁺²⁰ ₋₀	5.5"*10	(2)
RR-ASBS-20GR	508 ⁺³⁰ ₋₀	5.5"*10	(2)
RR-ASBS-40GR	1016 ⁺⁴⁰ ₋₀	5.5"*10	(2)
RR-ASBS-78GR	1980 ⁺⁶⁰ ₋₀	5.5"*10	(2)

PE BAG LABEL

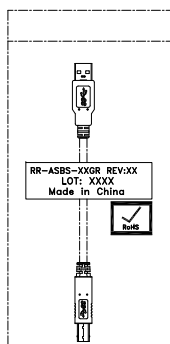


RoHS LABEL

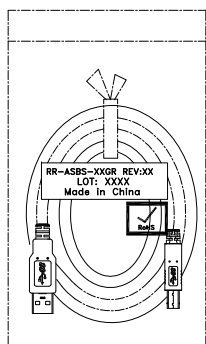


NOTES:PACK EACH CABLE IN A POLY BAG AND 25PCS IN A POLY BAG.

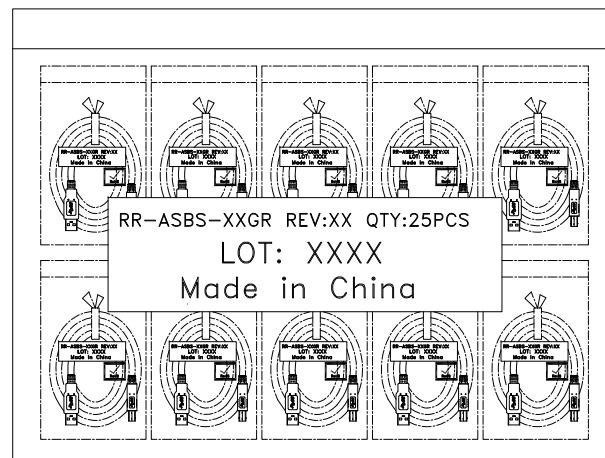
PACK(1)



PACK(2)



GTC
DOC.CENTER.ISSUE
SEP.05.2014
ONLY FOR
RELEASE



TITLE USB3.0 A MALE TO B MALE						DRAWING NUMBER RR-ASBS-XXGR			REV. A0
THIRD ANGLE PROJECTION	SIZE	SCALE	DRAW / DATE	CHECK / DATE	APPROVE / DATE	TOLERANCES	UNIT	SHEET	
	B	1:1	Lucas 09/05/14	Ray 09/05/14	Ray 09/05/14	X.X ± 0.5 X.XX ± 0.2	X.XXX ± 0.05 ANGLES ± 1°	mm 3/3	

THE INFORMATION CONTAINED HEREIN IS PROPRIETARY AND CONFIDENTIAL TO RR BUSINESS VENTURES, LLC. THE POSSESSOR AGREES TO THE FOLLOWING

1. MAINTAIN THIS DOCUMENT IN CONFIDENCE
2. NOT TO REPRODUCE OR COPY IT
3. NOT TO REVEAL OR PUBLISH IT IN WHOLE OR PART

1

2

3

4