

LinuxOnStik

Quick Startup Guide

Introduction

Congratulations on your purchase of the LinuxOnStik device.

LinuxOnStik has been configured with and contains everything you need to readily start running Linux from your MS-Windows PC.

LinuxOnStik provides the capability for starting and running Linux without having to either install or configure any software and without rebooting your MS-Windows PC. Instead, you run Linux on a virtual platform (called QEMU) alongside your MS-Windows. You can start, restart or shutdown Linux without affecting your MS-Windows system.

Enjoy!

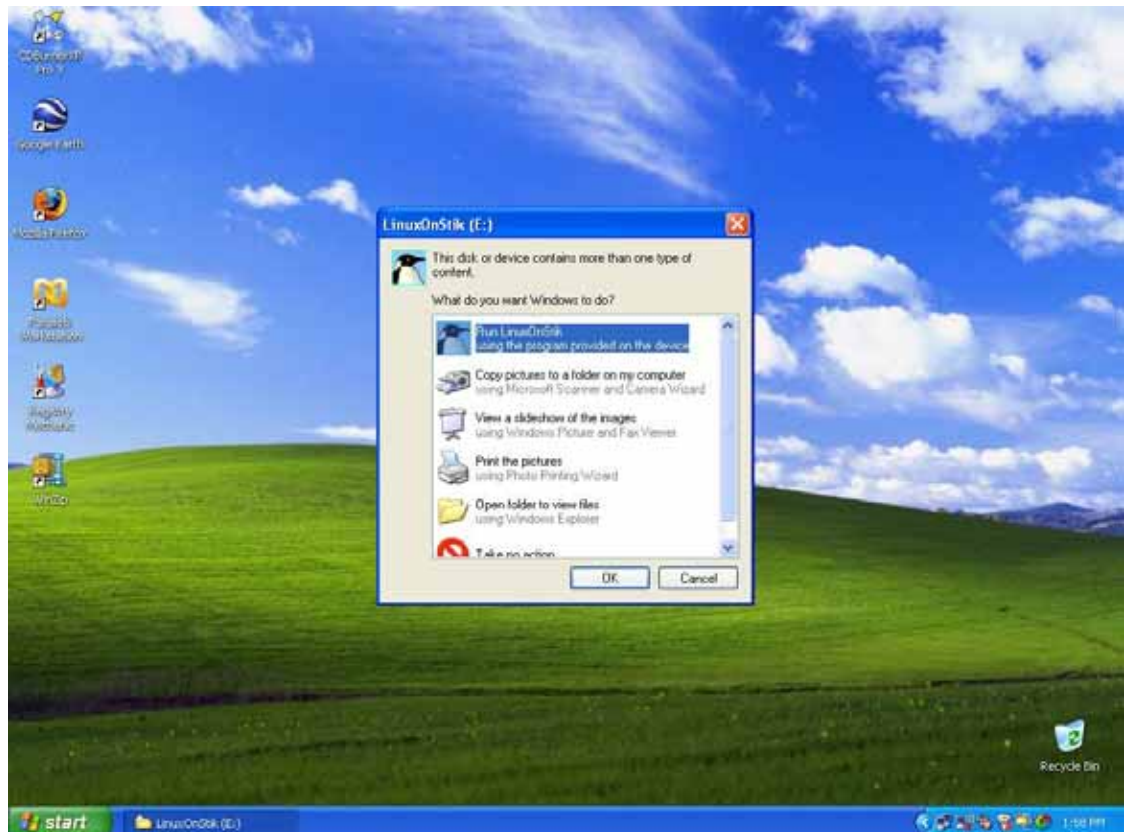
Getting Started

Running Linux from your LinuxOnStik is real fast and easy. Follow the instructions below to get started.

Instructions for Starting DSL Linux

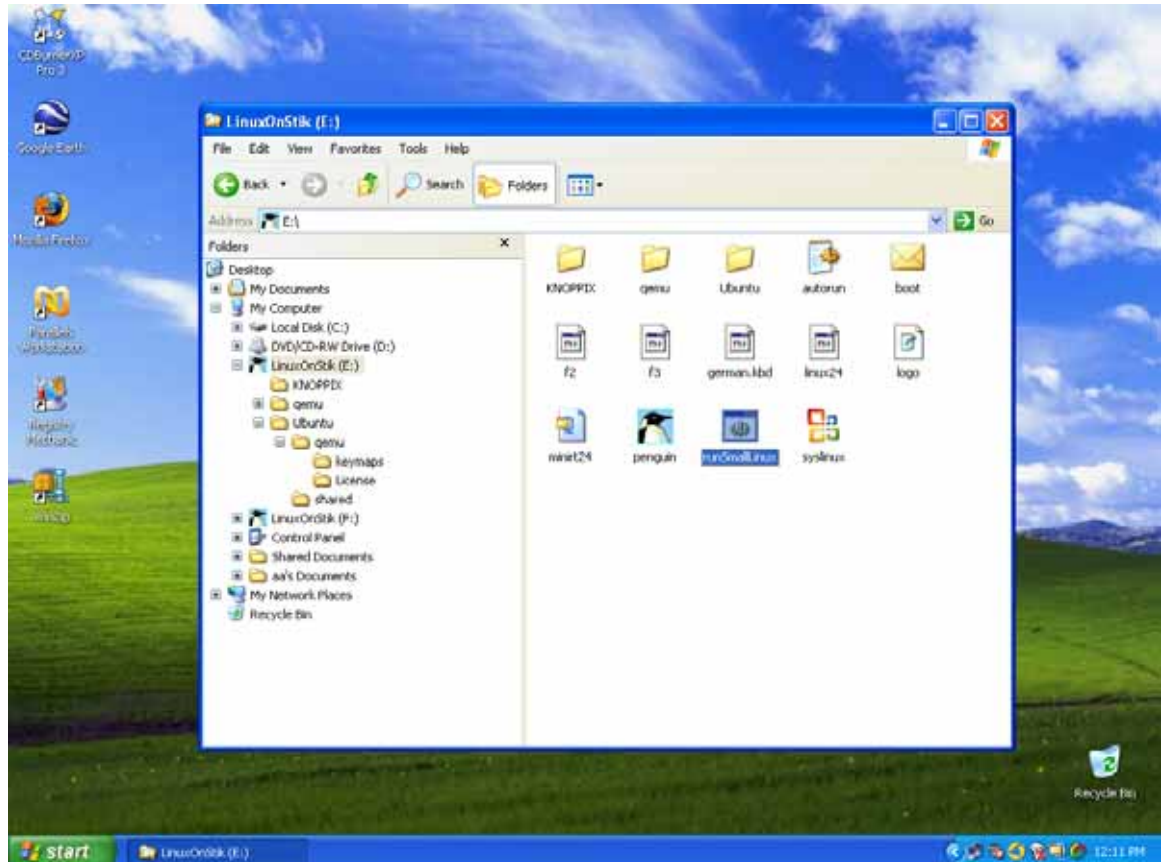
- 1- Power-up and boot your MS-Windows PC (desktop or laptop) and login if not yet done so.
- 2- Insert your LinuxOnStik device into a USB 1.1 or 2.0 port available on your PC. USB 2.0 is recommended for faster boot time and operations.
- 3- For most of the later versions of MS-Windows a program prompt window will pop up asking you to select a program to run as shown in the picture below.

In order to run DSL (Damn Small Linux) select the penguin icon and click ok. This will start QEMU followed by DSL Linux.



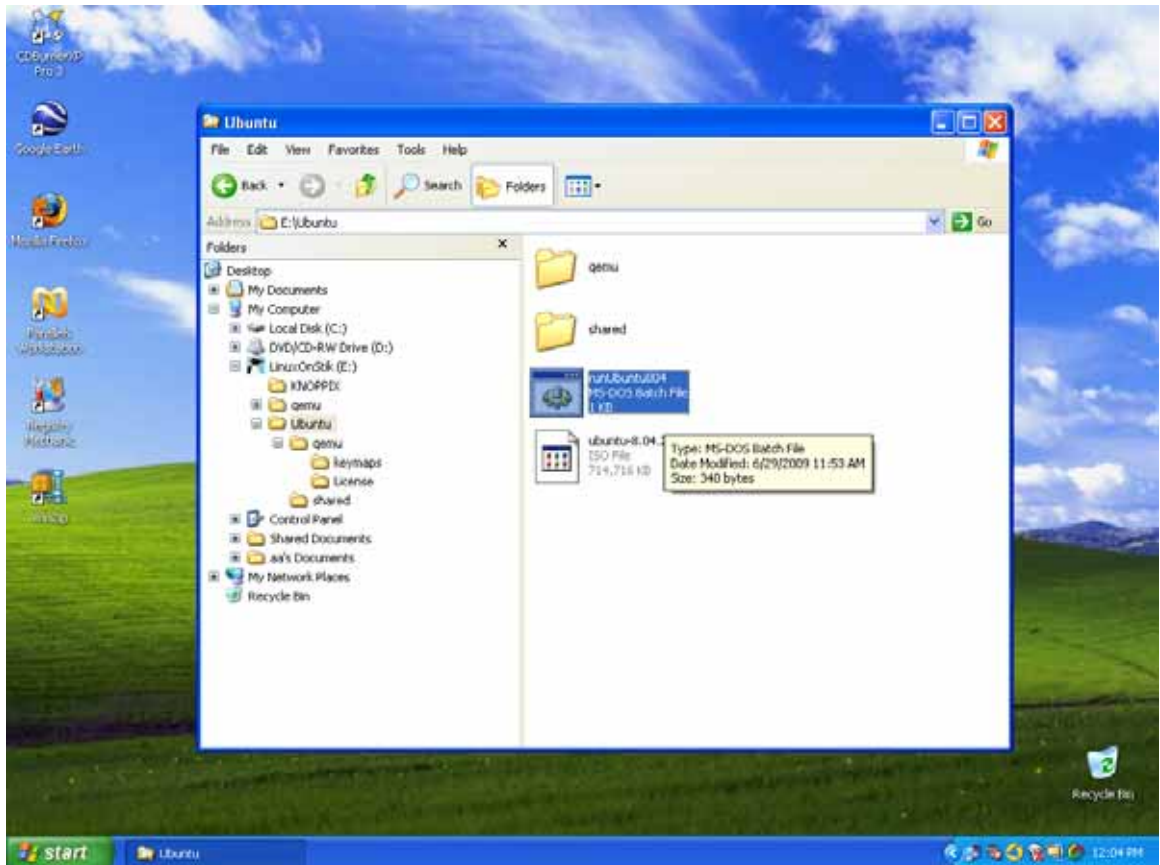
Manually Starting DSL Linux

If in your case a program prompt window does not come up then start File Explore browser and double click E:/runSmallLinux.bat file as shown in the picture below. This will start QEMU followed by DSL Linux.



Instructions for Starting Ubuntu Linux

- 1- Power-up and boot your MS-Windows PC (desktop or laptop) and login if not yet done so.
- 2- Insert your LinuxOnStik device into a USB 1.1 or 2.0 port available on your PC. USB 2.0 is recommended for faster boot time and operations.
- 3- Start MS-Windows File Explore browser and double click E:/Ubuntu/runUbuntu804.bat file as shown in the picture below. This will start QEMU followed by Ubuntu8.0.4 Linux.



Note that starting Ubuntu will take longer to boot when compared to DSL Linux.

See Ubuntu Linux Running inside MS-Windows



Starting and Running DSL & Ubuntu Linux (for 2GB or larger USB devices only)

Start DSL and Ubuntu Linux as previously instructed and they will both boot and run inside MS-Windows.

See DSL & Ubuntu Linux Running inside MS-Windows

