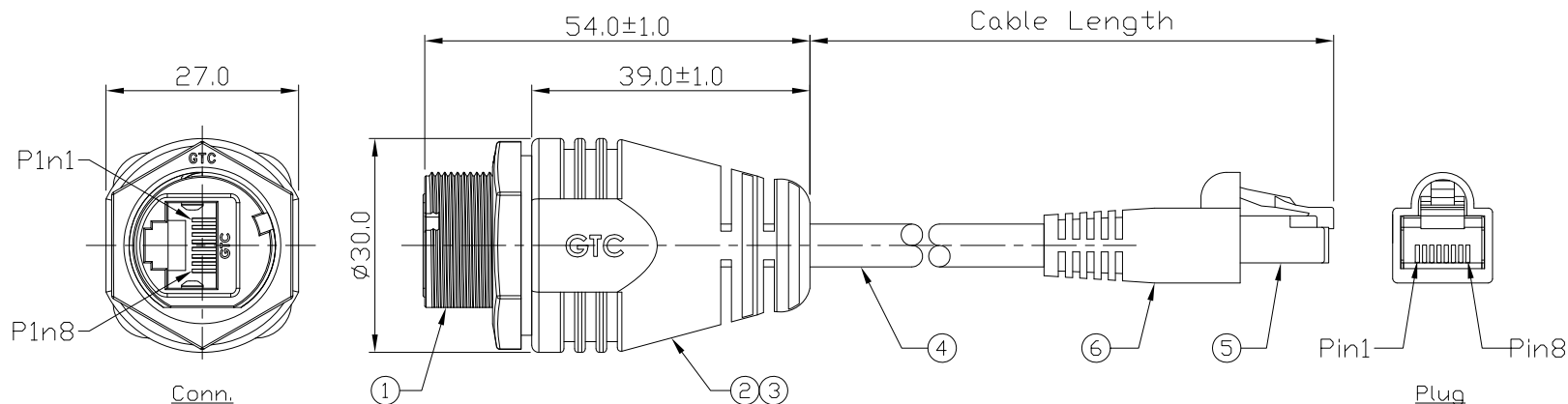


Notes: (Unless Otherwise Specified)

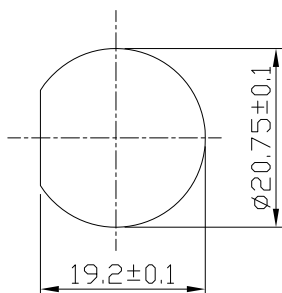
1. Waterproof Rate: IP68.
2. Recommend Panel Thickness: 0.8 to 4.0 mm.
3. Recommend Torque: 14~15 Kgf-cm.
4. RoHS Compliant.

REV	ECN#	DESCRIPTION OF REVISION	DRAW BY DATE	CHECK BY DATE	APPROVE BY DATE
A2	ECN-190141	RR-125310-02-XX=>RR-125310-0Z-XX	Whitney 01/30/19	Lucas 01/30/19	Ray 01/30/19



DOC.CENTER.ISSUE
JAN.30.2019
ONLY FOR
RELEASE

6	SR Cover	PVC Color: Black	1
5	RJ45 Plug	Housing: Thermoplastic, Color: Clean Contacts: Copper Alloy, Finish: Au Plated Shell: Cold Roll Steel, Finish: Ni Plated	1
4	Cable	CAT-5E 4PR*24AWG+Al/My+D(UV) OD=6.00mm, Color: Black	1
3	Over Mold	PVC Color: Black	1
2	Inner Mold	Thermoplastic Color: White	1
1	RJ45 Panel Connector	GT Contact P/N: GT125310-03-XX	1
Item	Part Name	Material / Finish	Qty



Recommend
Panel Cut-Out



Wiring Diagram

RR-125310-0Z-18	457 mm	+50
RR-125310-0Z-06	152.4 mm	±10
Part No.	Cable Length	Tol.

TITLE						DRAWING NUMBER			REV.	
RJ45 Plastic C3 Shielded Cable To Cable Jack Screw With Cable+RJ45 Plug						RR-125310-0Z-XX			A2	
	B	1:1	Joyce 07/21/15	Lucas 07/21/15	Ray 07/21/15	X.X ± 0.5 X.XX ± 0.2	X.XXX ± 0.05 ANGLES ± 1°	mm	1/1	
THIRD ANGLE PROJECTION	SIZE	SCALE	DRAW / DATE	CHECK / DATE	APPROVE / DATE	TOLERANCES		UNIT	SHEET	

USB FIREWIRE.com

THE INFORMATION CONTAINED HEREIN IS THE PROPRIETARY INFORMATION OF RR BUSINESS VENTURES, LLC. THE POSSESSOR AGREES TO THE FOLLOWING:

1. MAINTAIN THIS DOCUMENT IN CONFIDENCE.
2. NOT TO REPRODUCE OR COPY IT.
3. NOT TO REVEAL OR PUBLISH IT IN WHOLE OR IN PART.

COPYRIGHT © 2019