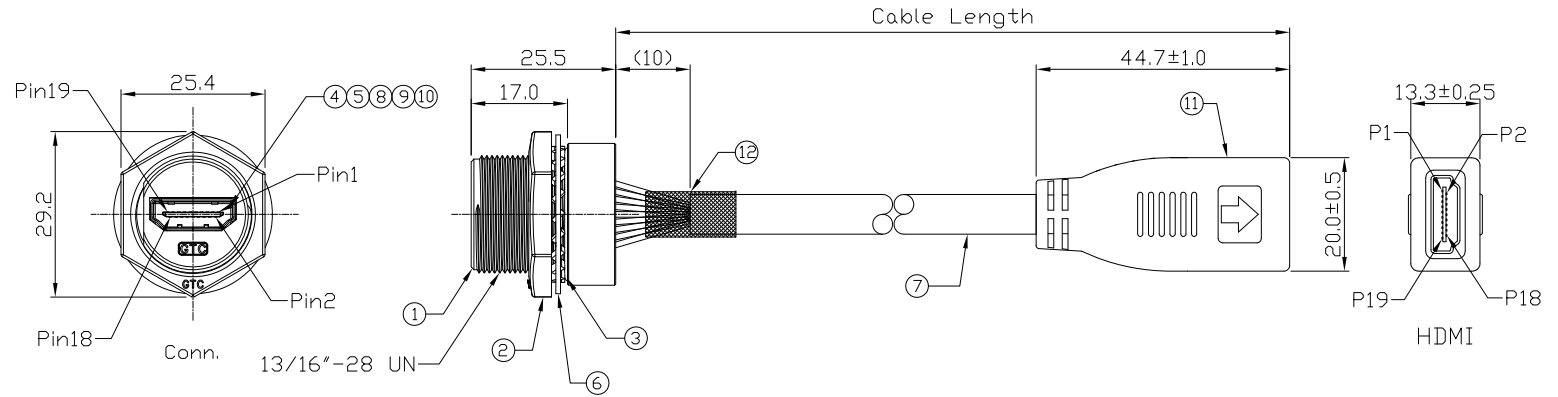


Notes: (Unless Otherwise Specified)

1. Waterproof Rate: IP68.
2. Recommend Panel Thickness: 0.8 to 4.5 mm.
3. Recommend Torque: 19~20 K f-cm.

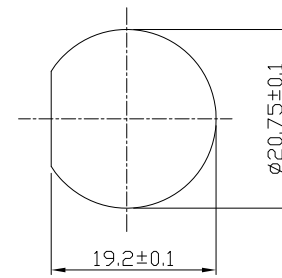
REV	ECN#	DESCRIPTION OF REVISION	DRAW BY DATE	CHECK BY DATE	APPROVE BY DATE
01			Karen 03/25/16	Lucas 03/25/16	Ray 03/25/16



Item	Part Name	Material / Finish	Qty
12	Shrink Tube	L=20mm Color: Black	1
11	HDMI Female	HDMI 19P Female IDC Type Color: Black	1
10	Glue	Epoxy Color: Black	1
9	Hold	Silicone Color: Black	1
8	PCB	FR-4 Color: Green	1
7	Cable	UL20276 (28#/1PR+EAM)*4+(1PR/28#+EAM)+28#/4C)+A885Z Color: Black, OD=6.8mm	1
6	Metal Washer	SUS	1
5	EMI Shielded Plate	Copper Finish: Ni Plated	1
4	HDMI Receptacle	Housing: Thermoplastic, Color: Black Contacts: Copper Alloy, Finish: Au Plated Shell: Copper Alloy, Finish: Ni Plated	1
3	O-Ring	Silicone Color: Red	1
2	Hex Nut	Zn Alloy Finish: Ni Plated	1
1	Housing	Zn Alloy Finish: Ni Plated	1

Conn.	Color	Qty	HDMI	Color	Qty
1	Brown	1	10	Blue	10
2	Drain	2	11	Drain	11
3	White	3	12	White	12
4	Red	4	13	Black	13
5	Drain	5	14	Red	14
6	White	6	15	Orange	15
7	Green	7	16	Yellow	16
8	Drain	8	17	Drain	17
9	White	9	18	Purple	18
			19	White	19
			Shell	Drain+Braid	Shell

Wiring Diagram



Recommend Panel Cut-Out



Part No.	Cable Length	Tol.
RR-2H2300-01-12	300 mm	+25

www.USBFireWire.com

NOTICE OF PROPRIETARY PROPERTY:

THE INFORMATION CONTAINED HEREIN IS THE PROPRIETARY PROPERTY OF USBFIREWIRE.COM THE POSSESSOR AGREES TO THE FOLLOWING:
 (a) TO MAINTAIN THIS DOCUMENT IN CONFIDENCE
 (b) NOT TO REPRODUCE OR COPY IT
 (c) NOT TO REVEAL OR PUBLISH IT IN WHOLE OR PART
 (d) ALL RIGHTS RESERVED

TITLE						DRAWING NUMBER			REV.	
HDMI C3 Metal C3 Panel Jack Screw With HDMI Receptacle						RR-2H2300-01-XX			01	
DD NOT SCALE DRAWINGS	B	1:1	Karen 03/25/16	Lucas 03/25/16	Ray 03/25/16	X.X ± 0.5	X.XXX ± 0.05	mm	1/1	
THIRD ANGLE PROJECTION	SIZE	SCALE	DRAW / DATE	CHECK / DATE	APPROVE / DATE	TOLERANCES		UNIT	SHEET	