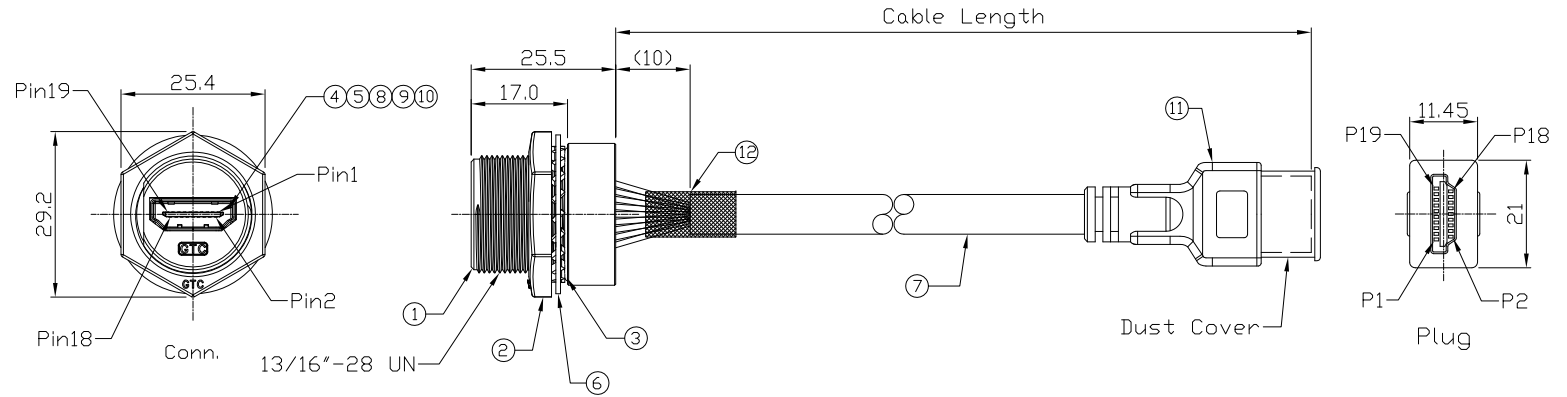


Notes: (Unless Otherwise Specified)

1. Waterproof Rate: IP68.
2. Recommend Panel Thickness: 0.8 to 4.5 mm.
3. Recommend Torque: 19~20 Kgf-cm.

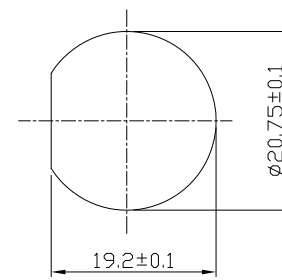
REV	ECN#	DESCRIPTION OF REVISION	DRAW BY DATE	CHECK BY DATE	APPROVE BY DATE
01			Karen 03/25/16	Lucas 03/25/16	Ray 03/25/16



Item	Part Name	Material / Finish	Q'ty
12	Shrink Tube	L=20mm Color: Black	1
11	HDMI Male	HDMI 19P Male IDC Type Color: Black	1
10	Glue	Epoxy Color: Black	1
9	Hold	Silicone Color: Black	1
8	PCB	FR-4 Color: Green	1
7	Cable	UL20276 (C28#/1PR+EAM)*4+(1PR/28#+EAM)+28#/4C)+A885Z Color: Black, OD=6.8mm	1
6	Metal Washer	SUS	1
5	EMI Shielded Plate	Copper Finish: Ni Plated	1
4	HDMI Receptacle	Housing: Thermoplastic, Color: Black Contacts: Copper Alloy, Finish: Au Plated Shell: Copper Alloy, Finish: Ni Plated	1
3	O-Ring	Silicone Color: Red	1
2	Hex Nut	Zn Alloy Finish: Ni Plated	1
1	Housing	Zn Alloy Finish: Ni Plated	1



Wiring Diagram



Recommend Panel Cut-Out



Part No.	Cable Length	Tol.
RR-2H2300-02-12	300 mm	+25

TITLE: HDMI C3 Metal C3 Panel Jack Screw With HDMI Plug  
DRAWING NUMBER: RR-2H2300-02-XX  
REV.: 01

THIRD ANGLE PROJECTION	SIZE	SCALE	DRAW / DATE	CHECK / DATE	APPROVE / DATE	TOLERANCES	UNIT	SHEET
DD NOT SCALE DRAWINGS	B	1:1	Karen 03/25/16	Lucas 03/25/16	Ray 03/25/16	X.X ± 0.5 X.XX ± 0.2	mm	1/1

**USB FIREWIRE.com**

THE INFORMATION CONTAINED HEREIN IS THE PROPRIETARY INFORMATION OF RR BUSINESS VENTURES, LLC. THE POSSESSOR AGREES TO THE FOLLOWING:

1. MAINTAIN THIS DOCUMENT IN CONFIDENCE
2. NOT TO REPRODUCE OR COPY IT
3. NOT TO REVEAL OR PUBLISH IT IN WHOLE OR IN PART

COPYRIGHT © 2019