

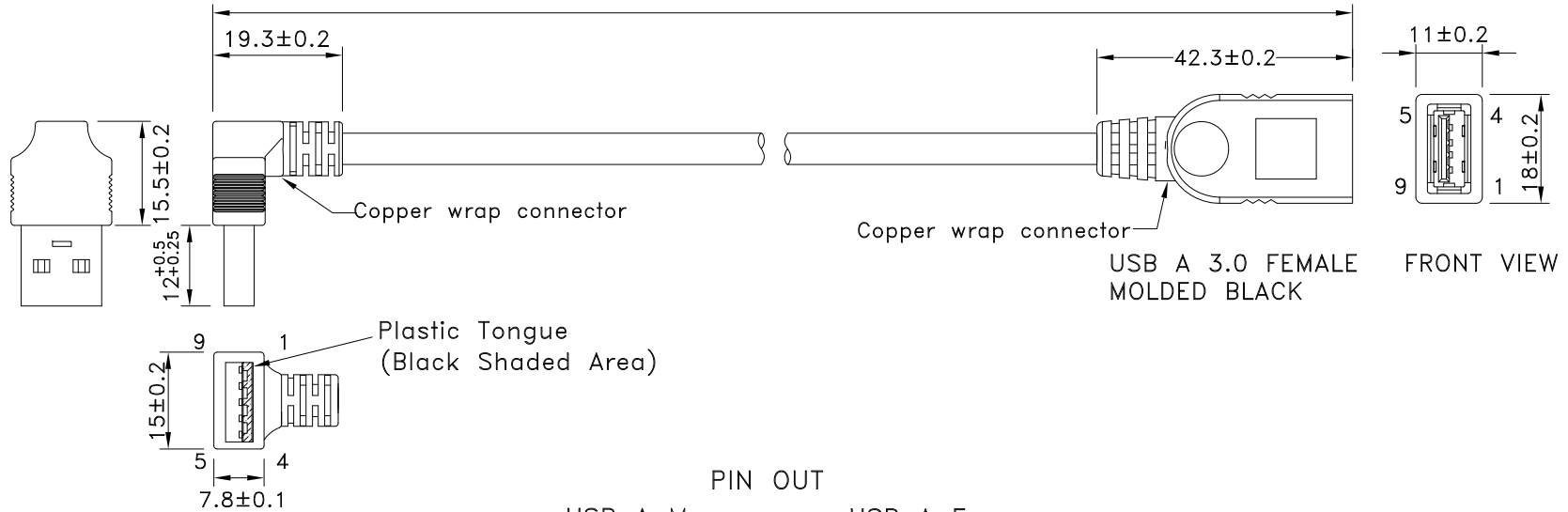
1

2

3

4

REV	ECN#	DESCRIPTION OF REVISION	DRAW BY DATE	CHECK BY DATE	APPROVE BY DATE
A0		Mass Production	Lucas 09/02/14	Ray 09/02/14	Ray 09/02/14

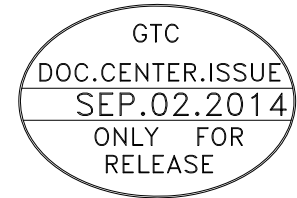


USB3.0 A MALE  
RIGHT ANGLE DOWN  
MOLDED BLACK

USB A 3.0 FEMALE  
MOLDED BLACK


PIN OUT

USB A M		USB A F
1	RED	1
2	WHITE	2
3	GREEN	3
4	BLACK	4
5	BLUE	5
6	YELLOW	6
7	DRAIN	7
8	PURPLE	8
9	ORANGE	9
SHEEL	BRAID	SHEEL



P/N	LENGTH
RR-ADAF-06GR	153 <sup>+20</sup> <sub>0</sub>
RR-ADAF-10GR	255 <sup>+20</sup> <sub>0</sub>
RR-ADAF-20GR	508 <sup>+30</sup> <sub>0</sub>
RR-ADAF-40GR	1016 <sup>+40</sup> <sub>0</sub>
RR-ADAF-78GR	1980 <sup>+60</sup> <sub>0</sub>

TITLE USB3.0 AM DOWN ANGLE TO A FEMALE						DRAWING NUMBER RR-ADAF-XXGR			REV. A0	
THIRD ANGLE PROJECTION	SIZE B	SCALE 1:1	DRAW / DATE Lucas 09/02/14	CHECK / DATE Ray 09/02/14	APPROVE / DATE Ray 09/02/14	TOLERANCES XX ± 0.5 X.XX ± 0.2	ANGLES X.XXX ± 0.05 ANGLES ± 1°	UNIT mm	SHEET 1/3	

  
**USBFIREWIRE.com**

THE INFORMATION CONTAINED HEREIN IS PROPRIETARY AND CONFIDENTIAL TO RR BUSINESS VENTURES, LLC. THE POSSESSOR AGREES TO THE FOLLOWING

1. MAINTAIN THIS DOCUMENT IN CONFIDENCE
2. NOT TO REPRODUCE OR COPY IT
3. NOT TO REVEAL OR PUBLISH IT IN WHOLE OR PART

1

2

3

4

1

2

3

4

REV	ECN#	DESCRIPTION OF REVISION	DRAW BY DATE	CHECK BY DATE	APPROVE BY DATE
A0		Mass Production	Lucas 09/02/14	Ray 09/02/14	Ray 09/02/14

\*\*\*CONSTRUCTION:

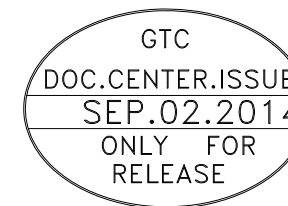
1.CABLE: \* UL2725 (1PR/28#+EAM)\*2+(1PR/28#+A)+2C/24#+AB85%  
 OD:5.5mm BLACKE JACKET (REV:3.0)

\*\*\*CONNECTOR:

2.USB A/M: \* USB A "3.0" TYPE 9PIN MALE SOLDER TYPE. (SWEETRAY P/N:CHUSB3AM03B)  
 \* PINS: 30u GOLD PLATED OVER NICKEL.  
 \* SHELL: STEEL WITH GOLD FLASH .  
 \* INSULATOR: BLUE COLOR P.B.T UL 94V-0 RATED.  
 \* MOLDED BLACK PVC 45P.

3.USB A/F: \* USB A "3.0" TYPE 9PIN FEMALE SOLDER TYPE. (XKJX P/N:CU3F009S16T00R)  
 \* PINS: 30u GOLD PLATED OVER NICKEL.  
 \* SHELL: STEEL WITH GOLD FLASH .  
 \* INSULATOR: BLUE COLOR P.B.T UL 94V-0 RATED.  
 \* MOLDED BLACK PVC 45P.

4.TEST: \* CT: 2 ohm IS: 5M ohm.  
 5.PACKING: \* PACK EACH CABLE IN A POLY BAG AND 25PCS IN A POLY BAG.  
 6.MATERIAL: \* MATERIAL WITH RoHS GRADE.



TITL			DRAWING NUMBER			REV.			
USB3.0 AM DOWN ANGLE TO A FEMALE			RR-ADAF-XXGR			A0			
	B	1:1	Lucas 09/02/14	Ray 09/02/14	Ray 09/02/14	X.X ± 0.5 X.XX ± 0.2	X.XXX ± 0.05 ANGLES ± 1°	mm	2/3
THIRD ANGLE PROJECTION	SIZE	SCALE	DRAW / DATE	CHECK / DATE	APPROVE / DATE	TOLERANCES		UNIT	SHEET

THE INFORMATION CONTAINED HEREIN IS PROPRIETARY AND CONFIDENTIAL TO RR BUSINESS VENTURES, LLC. THE POSSESSOR AGREES TO THE FOLLOWING  
 1. MAINTAIN THIS DOCUMENT IN CONFIDENCE  
 2. NOT TO REPRODUCE OR COPY IT  
 3. NOT TO REVEAL OR PUBLISH IT IN WHOLE OR PART

1

2

3

4

1

2

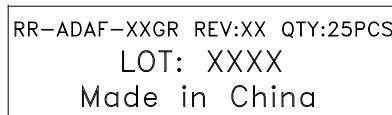
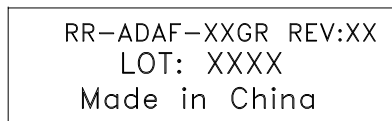
3

4

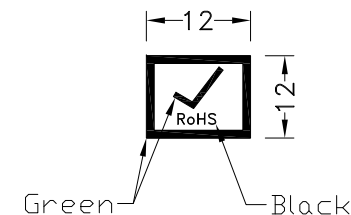
REV	ECN#	DESCRIPTION OF REVISION	DRAW BY DATE	CHECK BY DATE	APPROVE BY DATE
A0		Mass Production	Lucas 09/02/14	Ray 09/02/14	Ray 09/02/14

P/N	LENGTH	PE BAG	PACKAGE
RR-ADAF-06GR	153 <sup>+20</sup> <sub>-0</sub>	5.5"*10	(1)
RR-ADAF-10GR	255 <sup>+20</sup> <sub>-0</sub>	5.5"*10	(2)
RR-ADAF-20GR	508 <sup>+30</sup> <sub>-0</sub>	5.5"*10	(2)
RR-ADAF-40GR	1016 <sup>+40</sup> <sub>-0</sub>	5.5"*10	(2)
RR-ADAF-78GR	1980 <sup>+60</sup> <sub>-0</sub>	5.5"*10	(2)

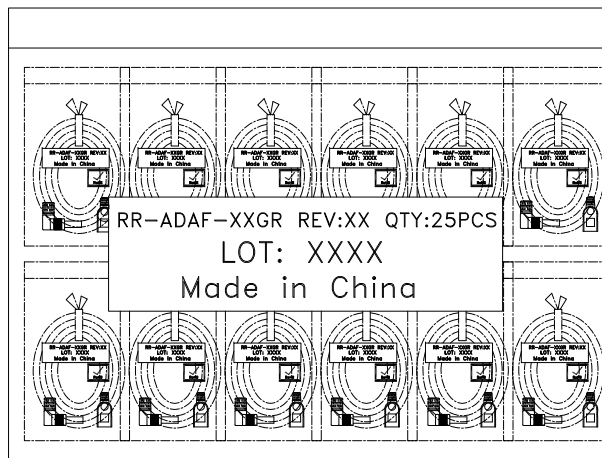
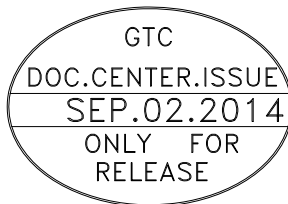
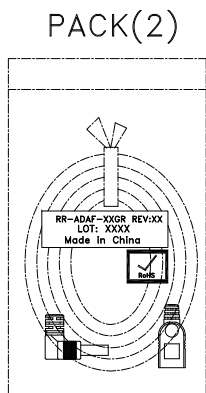
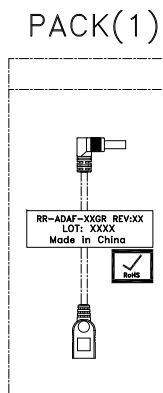
PE BAG LABEL



RoHS LABEL



NOTES:PACK EACH CABLE IN A POLY BAG AND 25PCS IN A POLY BAG.



TITLE USB3.0 AM DOWN ANGLE TO A FEMALE						DRAWING NUMBER RR-ADAF-XXGR			REV. A0	
THIRD ANGLE PROJECTION	SIZE	SCALE	DRAW / DATE	CHECK / DATE	APPROVE / DATE	TOLERANCES		UNIT	SHEET	
DD NOT SCALE DRAWINGS	B	1:1	Lucas 09/02/14	Ray 09/02/14	Ray 09/02/14	X.X ± 0.5 X.XX ± 0.2	X.XXX ± 0.05 ANGLES ± 1°	mm	3/3	

THE INFORMATION CONTAINED HEREIN IS PROPRIETARY AND CONFIDENTIAL TO RR BUSINESS VENTURES, LLC. THE POSSESSOR AGREES TO THE FOLLOWING

1. MAINTAIN THIS DOCUMENT IN CONFIDENCE
2. NOT TO REPRODUCE OR COPY IT
3. NOT TO REVEAL OR PUBLISH IT IN WHOLE OR PART

1

2

3

4