

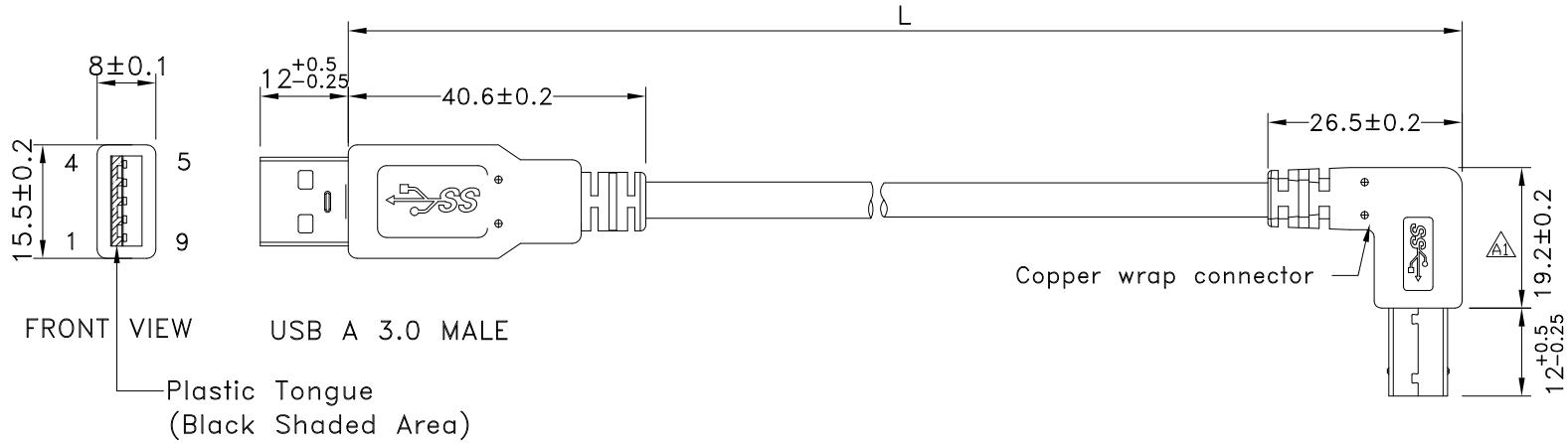
1

2

3

4

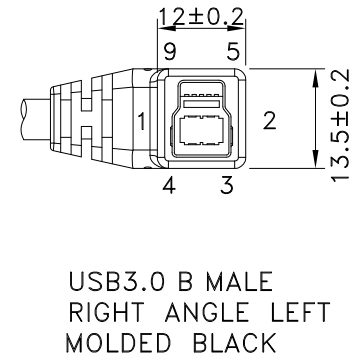
REV	ECN#	DESCRIPTION OF REVISION	DRAW BY DATE	CHECK BY DATE	APPROVE BY DATE
A1	ECN-190604	16mm=>19.2mm	Lucas 06/13/19	Lucas 06/13/19	Ray 06/13/19



GTC
DOC.CENTER.ISSUE
JUN.17.2019
ONLY FOR
RELEASE

PIN OUT

USB A M		USB B M
1	RED	1
2	WHITE	2
3	GREEN	3
4	BLACK	4
5	BLUE	5
6	YELLOW	6
7	DRAIN	7
8	PURPLE	8
9	ORANGE	9
	BRAID	
SHEEL		SHEEL



P/N	LENGTH
RR-ASBL-06GR	153 ⁺²⁰ ₀
RR-ASBL-10GR	255 ⁺²⁰ ₀
RR-ASBL-20GR	508 ⁺³⁰ ₀
RR-ASBL-40GR	1016 ⁺⁴⁰ ₀
RR-ASBL-78GR	1980 ⁺⁶⁰ ₀

TITLE USB3.0 AM TO BM RIGHT ANGLE LEFT					DRAWING NUMBER RR-ASBL-XXGR			REV. A1	
THIRD ANGLE PROJECTION	SIZE B	SCALE 1:1	DRAW / DATE Lucas 09/23/14	CHECK / DATE Ray 09/23/14	APPROVE / DATE Ray 09/23/14	TOLERANCES X.X ± 0.5 X.XX ± 0.2	ANGLES X.XXX ± 0.05 X.XX ± 1°	UNIT mm	SHEET 1/3

USB FIREWIRE.com

THE INFORMATION CONTAINED HEREIN IS PROPRIETARY AND CONFIDENTIAL TO RR BUSINESS VENTURES, LLC. THE POSSESSOR AGREES TO THE FOLLOWING

1. MAINTAIN THIS DOCUMENT IN CONFIDENCE
2. NOT TO REPRODUCE OR COPY IT
3. NOT TO REVEAL OR PUBLISH IT IN WHOLE OR PART

1

2

3

4

1

2

3

4

REV	ECN#	DESCRIPTION OF REVISION	DRAW BY DATE	CHECK BY DATE	APPROVE BY DATE
A1	ECN-190604	16mm=>19.2mm	Lucas 06/13/19	Lucas 06/13/19	Ray 06/13/19

***CONSTRUCTION:

1.CABLE: * UL2725[(1PR/28#+EAM)*2]+(1PR/28#+A)+2C/24#]+AB85%
 OD:5.5mm BLACKE JACKET (REV:3.0)

***CONNECTOR:

2.USB A/M: * USB A "3.0" TYPE 9PIN MALE SOLDER TYPE.(NEW-CONN P/N:06801508M5CA)
 * PINS: 30u GOLD PLATED OVER NICKEL.
 * SHELL: BRASS WITH GOLD FLASH .
 * INSULATOR: BLUE COLOR P.B.T UL 94V-0 RATED.
 * MOLDED BLACK PVC 45P.

3.USB B/M: * USB B "3.0" TYPE 9PIN MALE SOLDER TYPE. (NEW CONN P/N:06800701MXXO)
 * PINS: 30u GOLD PLATED OVER NICKEL.
 * SHELL: STEEL WITH GOLD FLASH .
 * INSULATOR: BLUE COLOR P.B.T UL 94V-0 RATED.
 * MOLDED BLACK PVC 45P.

4.TEST: * CT: 2 ohm IS: 5M ohm.

5.PACKING: * PACK EACH CABLE IN A POLY BAG AND 25PCS IN A POLY BAG.

6.MATERIAL: * MATERIAL WITH RoHS GRADE.



TITL			DRAWING NUMBER			REV.			
USB3.0 AM TO BM RIGHT ANGLE LEFT			RR-ASBL-XXGR			A1			
	B	1:1	Lucas 09/23/14	Ray 09/23/14	Ray 09/23/14	X.X ± 0.5 X.XX ± 0.2	X.XXX ± 0.05 ANGLES ± 1°	mm	2/3
THIRD ANGLE PROJECTION	SIZE	SCALE	DRAW / DATE	CHECK / DATE	APPROVE / DATE	TOLERANCES		UNIT	SHEET

THE INFORMATION CONTAINED HEREIN IS PROPRIETARY AND CONFIDENTIAL TO RR BUSINESS VENTURES, LLC. THE POSSESSOR AGREES TO THE FOLLOWING

1. MAINTAIN THIS DOCUMENT IN CONFIDENCE
2. NOT TO REPRODUCE OR COPY IT
3. NOT TO REVEAL OR PUBLISH IT IN WHOLE OR PART

1

2

3

4

1

2

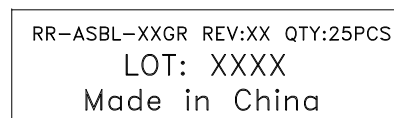
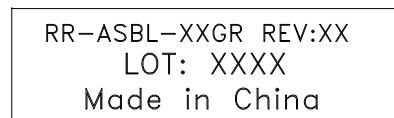
3

4

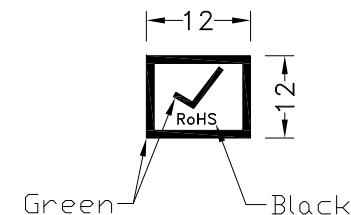
REV	ECN#	DESCRIPTION OF REVISION	DRAW BY DATE	CHECK BY DATE	APPROVE BY DATE
A1	ECN-190604	16mm=>19.2mm	Lucas 06/13/19	Lucas 06/13/19	Ray 06/13/19

P/N	LENGTH	PE BAG	PACKAGE
RR-ASBL-06GR	153 ⁺²⁰ ₋₀	5.5"*10	(1)
RR-ASBL-10GR	255 ⁺²⁰ ₋₀	5.5"*10	(2)
RR-ASBL-20GR	508 ⁺³⁰ ₋₀	5.5"*10	(2)
RR-ASBL-40GR	1016 ⁺⁴⁰ ₋₀	5.5"*10	(2)
RR-ASBL-78GR	1980 ⁺⁶⁰ ₋₀	5.5"*10	(3)

PE BAG LABEL

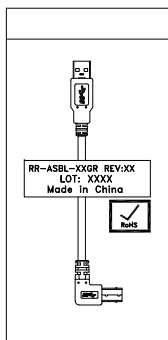


RoHS LABEL

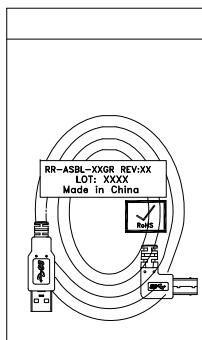


NOTES:PACK EACH CABLE IN A POLY BAG AND 25PCS IN A POLY BAG.

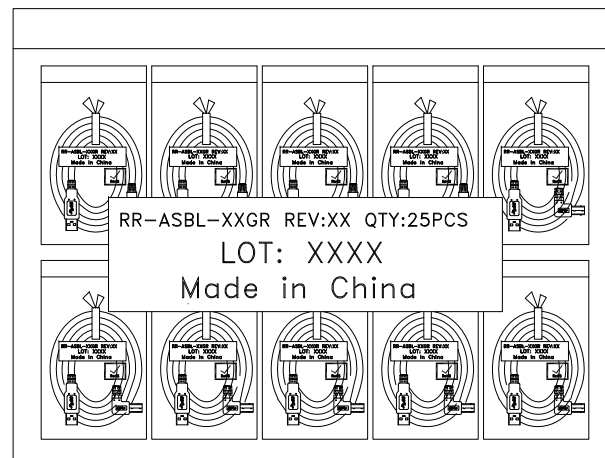
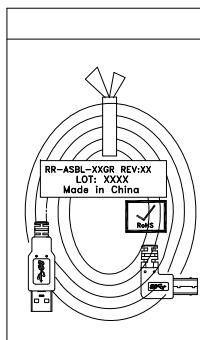
PACK(1)



PACK(2)



PACK(3)



GTC
 DOC.CENTER.ISSUE
 JUN.17.2019
 ONLY FOR
 RELEASE

TITLE USB3.0 AM TO BM RIGHT ANGLE LEFT						DRAWING NUMBER RR-ASBL-XXGR			REV. A1
THIRD ANGLE PROJECTION	SIZE	SCALE	DRAW / DATE	CHECK / DATE	APPROVE / DATE	TOLERANCES		UNIT	SHEET
	B	1:1	Lucas 09/23/14	Ray 09/23/14	Ray 09/23/14	X.X ± 0.5 X.XX ± 0.2	X.XXX ± 0.05 ANGLES ± 1°	mm	3/3

THE INFORMATION CONTAINED HEREIN IS PROPRIETARY AND CONFIDENTIAL TO RR BUSINESS VENTURES, LLC. THE POSSESSOR AGREES TO THE FOLLOWING

1. MAINTAIN THIS DOCUMENT IN CONFIDENCE
2. NOT TO REPRODUCE OR COPY IT
3. NOT TO REVEAL OR PUBLISH IT IN WHOLE OR PART

1

2

3

4