

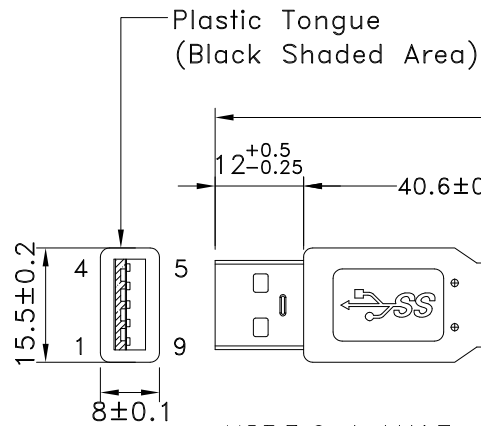
1

2

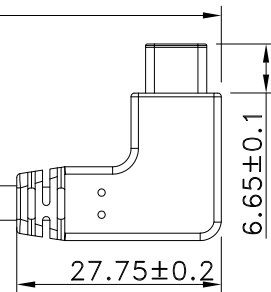
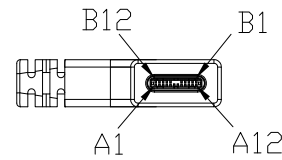
3

4

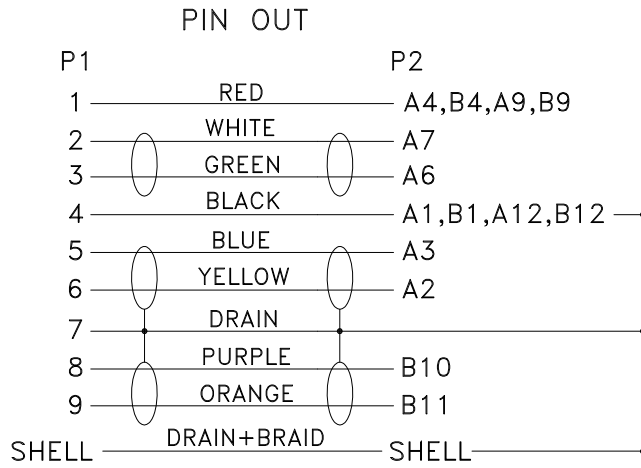
REV	ECN#	DESCRIPTION OF REVISION	DRAW BY DATE	CHECK BY DATE	APPROVE BY DATE
A2	ECN-160513	Change Type C Connector	Lucas 05/31/16	Ray 05/31/16	Ray 05/31/16



USB3.0 A MALE
MOLDED BLACK
(P1)



USB TYPE C M
RIGHT ANGLE RIGHT/LEFT
MOLDED BLACK
(P2)



GTC
DOC.CENTER.ISSUE
JUN.05.2018
ONLY FOR
RELEASE

P/N	LENGTH
RR-ASCH-05GRC	127 ⁺²⁰ ₋₀
RR-ASCH-10GRC	255 ⁺²⁰ ₋₀
RR-ASCH-15GRC	381 ⁺³⁰ ₋₀
RR-ASCH-25GRC	635 ⁺³⁰ ₋₀
RR-ASCH-40GRC	1016 ⁺⁴⁰ ₋₀
RR-ASCH-75GRC	1905 ⁺⁶⁰ ₋₀

TITLE USB3.0 AM TO USB3.1 C TYPE MALE RIGHT ANGLE RIGHT/LEFT					DRAWING NUMBER RR-ASCH-XXGRC			REV. A2	
THIRD ANGLE PROJECTION	SIZE B	SCALE 1:1	DRAW / DATE Lucas 12/28/15	CHECK / DATE Ray 12/28/15	APPROVE / DATE Ray 12/28/15	TOLERANCES X.X ± 0.5 X.XX ± 0.2		UNIT mm	SHEET 1/3

THE INFORMATION CONTAINED HEREIN IS THE PROPRIETARY INFORMATION OF RR BUSINESS VENTURES, LLC. THE POSSESSOR AGREES TO THE FOLLOWING:

1. MAINTAIN THIS DOCUMENT IN CONFIDENCE
2. NOT TO REPRODUCE OR COPY IT
3. NOT TO REVEAL OR PUBLISH IT IN WHOLE OR IN PART

COPYRIGHT © 2019
RR BUSINESS VENTURES, LLC.

1

2

3

4

1

2

3

4

REV	ECN#	DESCRIPTION OF REVISION	DRAW BY DATE	CHECK BY DATE	APPROVE BY DATE
A2	ECN-160513	Change Type C Connector	Lucas 05/31/16	Ray 05/31/16	Ray 05/31/16

***CONSTRUCTION:

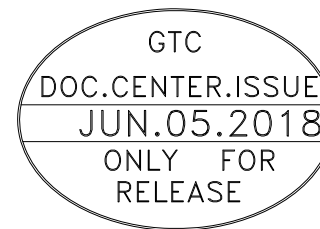
1.CABLE: * UL2725 (1P/30#+EAM)*2+(1P/30#)+(2C/24#)+AEB(AL)65% OD:5.0mm
BLACK PVC JACKET.

***CONNECTOR:

2.USB A/M: * USB A "3.0" TYPE 9PIN MALE SOLDER TYPE.(NEW-CONN P/N:06801508M5CA)
* PINS: 30u GOLD PLATED OVER NICKEL.
* INSULATOR: BLUE COLOR P.B.T UL 94V-0 RATED.
* SHELL: STEEL WITH GOLD FLASH .
* MOLDED: BLACK PVC 45P.

3.USB C/M: * USB TYPE C MALE SOLDER TYPE,DEREN OR EQUIVALENT.
* PINS: 30u GOLD PLATED OVER NICKEL.
* INSULATOR: BLACK THERMOPLASTIC UL 94V-0.
* SHELL: STEEL WITH GOLD FLASH.
* RESISTOR(56KΩ) AND CAPACITOR(10nF 30V).
* MOLDED: BLACK PVC 45P.

4.TEST: * CT: 2 ohm IS: 5M ohm
5.PACKING: * PACK EACH CABLE IN A POLY BAG AND 25PCS IN A POLY BAG.
6.MATERIAL: * MATERIAL WITH RoHS GRADE.



TITLE USB3.0 AM TO USB3.1 C TYPE MALE RIGHT ANGLE RIGHT/LEFT			DRAWING NUMBER RR-ASCH-XXGRC			REV. A2			
DD NOT SCALE DRAWINGS	B	1:1	Lucas 12/28/15	Ray 12/28/15	Ray 12/28/15	X.X ± 0.5 X.XX ± 0.2	X.XXX ± 0.05 ANGLES ± 1°	mm	2/3
THIRD ANGLE PROJECTION	SIZE	SCALE	DRAW / DATE	CHECK / DATE	APPROVE / DATE	TOLERANCES		UNIT	SHEET

THE INFORMATION CONTAINED HEREIN IS THE PROPRIETARY INFORMATION OF RR BUSINESS VENTURES, LLC. THE POSSESSOR AGREES TO THE FOLLOWING

1. MAINTAIN THIS DOCUMENT IN CONFIDENCE
2. NOT TO REPRODUCE OR COPY IT
3. NOT TO REVEAL OR PUBLISH IT IN WHOLE OR IN PART

COPYRIGHT © 2019
RR BUSINESS VENTURES, LLC.

1

2

3

4

1

2

3

4

REV	ECN#	DESCRIPTION OF REVISION	DRAW BY DATE	CHECK BY DATE	APPROVE BY DATE
A2	ECN-160513	Change Type C Connector	Lucas 05/31/16	Ray 05/31/16	Ray 05/31/16

P/N	LENGTH(mm)	PE BAG(Inch)	PACKAGE
RR-ASCH-05GRC	127 ⁺²⁰ ₋₀	5.5"*10	(1)
RR-ASCH-10GRC	255 ⁺²⁰ ₋₀	5.5"*10	(2)
RR-ASCH-15GRC	381 ⁺³⁰ ₋₀	5.5"*10	(2)
RR-ASCH-25GRC	635 ⁺³⁰ ₋₀	5.5"*10	(2)
RR-ASCH-40GRC	1016 ⁺⁴⁰ ₋₀	5.5"*10	(2)
RR-ASCH-75GRC	1905 ⁺⁶⁰ ₋₀	5.5"*10	(3)

PE BAG LABEL

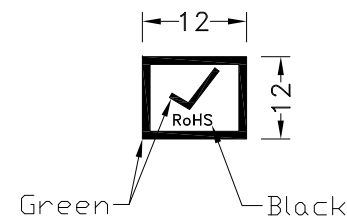
RR-ASCH-XXGRC REV:XX
 LOT: XXXX
 Made in China

25

75mm

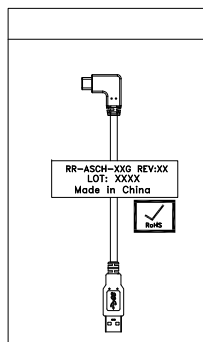
RR-ASCH-XXGRC REV:XX QTY:25PCS
 LOT: XXXX
 Made in China

RoHS LABEL

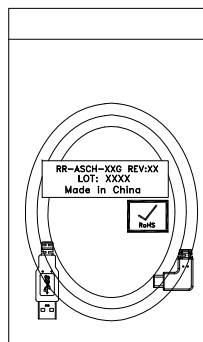


NOTES:PACK EACH CABLE IN A POLY BAG AND 25PCS IN A POLY BAG.

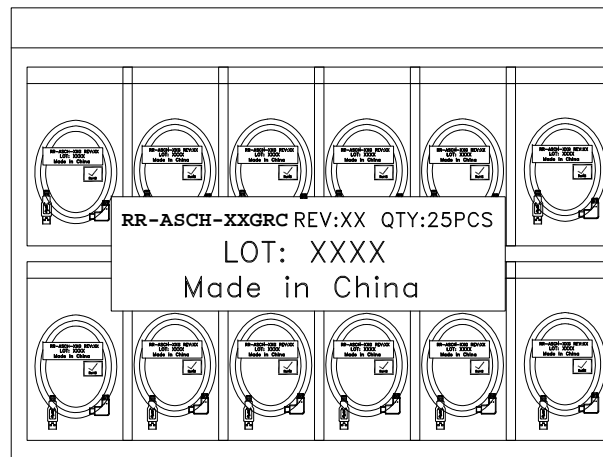
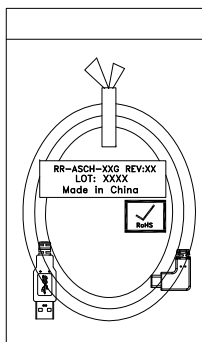
PACK(1)



PACK(2)



PACK(3)



GTC
 DOC.CENTER.ISSUE
 JUN.05.2018
 ONLY FOR
 RELEASE

TITLE
 USB3.0 AM TO USB3.1 C TYPE MALE RIGHT ANGLE RIGHT/LEFT

DRAWING NUMBER
 RR-ASCH-XXGRC

REV.
 A2

	B	1:1	Lucas 12/28/15	Ray 12/28/15	Ray 12/28/15	X.X ± 0.5 X.XX ± 0.2	X.XXX ± 0.05 ANGLES ± 1°	mm	3/3
THIRD ANGLE PROJECTION	SIZE	SCALE	DRAW / DATE	CHECK / DATE	APPROVE / DATE	TOLERANCES		UNIT	SHEET



THE INFORMATION CONTAINED HEREIN IS THE PROPRIETARY INFORMATION OF RR BUSINESS VENTURES, LLC. THE POSSESSOR AGREES TO THE FOLLOWING:
 1. MAINTAIN THIS DOCUMENT IN CONFIDENCE
 2. NOT TO REPRODUCE OR COPY IT
 3. NOT TO REVEAL OR PUBLISH IT IN WHOLE OR IN PART
 COPYRIGHT © 2019
 RR BUSINESS VENTURES, LLC.

1

2

3

4